

ALBA

ALBA IS A BRIDGE TO THE FUTURE

It's a new dawn and the way we live our lives is changing. At Bridgehill, we believe in looking forward and thinking differently, by creating apartments designed to accommodate your lifestyle and your evolving wants and needs.

ALBA by Bridgehill offers homes built for a new generation of urbanists. Homes that embody comfort, craftsmanship and innovation at their core.

From striking architecture and exquisite quality to brilliantly flexible floorplans, Bridgehill is committed to delivering places that provide you with endless possibilities; urban sanctuaries that adapt to the modern urban lifestyle in one of Sydney's most exciting inner-city neighbourhoods.



ALBA IS HOME

ALBA BY BRIDGEHILL

ARTISAN APARTMENTS & PENTHOUSES

ALBA is a collection of apartments and penthouses from the makers of UNO & JADE in Green Square. Bridgehill are creating beautifully appointed 1, 2 & 3 bedroom apartments and generously proportioned double storey penthouses.

ALBA is beautifully crafted with a skin of warm, textured terracotta masonry, evoking the brickwork reminiscent of Green Square's industrial heritage. Beautiful from every angle, ALBA is honouring the past while looking to the future.



Artist impression, indicative only.

Fine grain laneways between vertical pods create a sense of discovery, connection and freedom. These are dwellings in tune with nature and the climate, providing elevated amenities and unique flexibility that empower you to customise your space.

NICK SISSONS AND JAMES MCNALLY
ARCHITECTS



Artist impression, indicative only.



Artist impression, indicative only.

E M O H

A HOME THAT CAPTURES THE IMAGINATION

Welcome home to a place that welcomes you with flexible floorplans, rooms flooded with light and air, smart interiors that invite multiple uses and layouts oriented to make the most of natural elements; the sun, the breeze and all-encompassing views.

Strength and structural durability meet light, glazed and dynamic elements for a playful juxtaposition of materials. ALBA's sculptural form captures the imagination; each home is an individual expression of style and space, design and flexibility. From the moment you step inside your door, you'll feel a sense of pride.



Artist impression, indicative only.



Artist impression, indicative only.



ALBA is defined by interesting urban spaces, from multi-use kitchens to adaptable rooms. No detail has been spared in crafting a home that supports evolving modern lifestyles.

NICK SISSONS AND JAMES MCNALLY
ARCHITECTS

ALBA is the perfect place from which to live the way you want, with unique layouts that evolve with your needs. Discover the brilliance of ALBA's sleek and functional kitchens where next generation finishes instantly upgrade your lifestyle. Convertibility of interior spaces provide multiple uses for home and home office.

Thoughtful design and generous use of storage ensures you have all the space you need. It's a celebration of form, purpose and innovation, delivering flexible spaces that bring value to your home.



Artist impression, indicative only.



Artist impression, indicative only.

The excitement of dwelling in the heart of a thriving urban precinct is balanced by tranquil interior spaces of textured materials and exquisite finishes.

One of life's little luxuries is having a place of sanctuary. Find the time to immerse yourself in the clean lines and the calming palette that defines your elegant bathroom, impeccably designed with a generous sense of space.

Porcelain tiles, wall mounted ceramic basins and concealed cistern toilets add to the bathroom's minimalist aesthetic. Some apartments feature freestanding baths, perfect for sinking into at the end of another great day.



Artist impression, indicative only.



Artist impression, indicative only.

22ND CENTURY LIVING

Artfully elevated from the ground, lending the building a sense of both lightness and strength, ALBA's ground floor contains a vaulted lobby space characterised by engineered timber and glass; an elegant welcome to your home. Welcome to the future with facial recognition intercom at the lobby providing security and comfort.

A mix of retail on the ground floor creates a lively space for all who visit. The design addresses both the needs of residents, and the Green Square community as a whole.

A striking rooftop garden expands the functionality of your home and brings more value to your lifestyle. Lush landscaping immerses you in a natural setting, providing a unique space to relax and socialise as you look out to vibrant views of your neighbourhood.

Rich foliage throughout the rooftop urban sanctuary creates garden rooms designed for gathering, where unique sculptural seating is the perfect spot from which to enjoy sweeping district views.

A contemporary pallet of native and textural planting engulfs the setting, creating an instant connection to nature.



Artist impression, indicative only.

L I V E

ALBA IS LIVING LOCAL

THE GROUNDS

Take a stroll through the lush gardens before settling in for a bite to eat. Whether it's high tea or a quick stop by the artisan bakery and patisserie, feasting at The Grounds is all about indulging the senses. Prepare to dine in style amidst the rustic charm of The Grounds.

CARRIAGEWORKS

Carriageworks is one of the most significant contemporary multi-arts centres in Australia. The weekly Carriageworks Farmers Market is also a Sydney institution, providing the freshest seasonal produce from the best growers and producers from around the country.

GREEN SQ. LIBRARY

There's more than just books at the library. Explore music, makerspace kits, video games, toys, film and more, all free to borrow. Green Square Library also has music scores and a Chinese language collection of books, newspapers, magazines, movies and music.

SONOMA BAKERY

Sourdough mecca, otherwise known as Sonoma is renowned for woodfired bread and robust coffee. Be seduced by the aroma of buttery croissants and batches of cinnamon dusted buns created by one of Sydney's greatest artisan bakers.





Carriageworks Farmers Market

ALBA HAS MANY HIDDEN SECRETS

ALBA rises above a neighbourhood of local secrets. This once industrial area has gentrified over time and created a myriad of coveted cafes, galleries and parklands. ALBA is at the centre of it all.

Every weekend, the neighbourhood comes alive with bustling cafes serving artful plates and an upbeat community vibe you can't help but delight in. Meet friends and socialise. Rest and relax. There's no better place to be a local.



ALBA IS LOCAL

GREEN SQ. SYDNEY

Located within Sydney's once industrial heartland, Green Square is quickly establishing itself as the capital of South Sydney's new urban sophistication.

Green Square's thriving precinct is not only within effortless proximity to the CBD, airport, coastline, major sporting facilities and educational institutions, it's the subject of a \$540 million urban renewal project which will see it evolve into a world-class neighbourhood for Sydneysiders.

From a library, plaza, a public school and aquatic centre, to parks, playgrounds, public art, creative hub and exceptional transport links, it's the perfect location from which to live, work and play.

THE HEART OF GREEN SQUARE

< SYDNEY CENTRAL STATION 3KM
< SYDNEY UNIVERSITY 2.5KM
< UNIVERSITY OF TECHNOLOGY 3KM

COOGEE BEACH 6KM >
BRONTE BEACH 7KM >
BONDI BEACH 8KM >



Charming eateries and chic bars. Convenience shopping and enticing boutiques. Dog-friendly parks and interesting galleries. Zetland and its neighbouring suburbs including Alexandria, Waterloo, Erskineville and Kensington offer a rich living experience that its local community know and love. With convenient proximity to just about everywhere, there's always something new to explore.

ALBA IS LIVING LOCAL

GREEN SQUARE IS SYDNEY'S SECRET URBAN VILLAGE

THE DRYING GREEN PARK

Wool washing and drying was one of the first industries to develop in Green Square in 1815. The Drying Green honours this memory with terraced lawns, trees, barbecues and shade structures that create a wonderful place for friends and family to gather and play.

DESIGNER RETAILERS

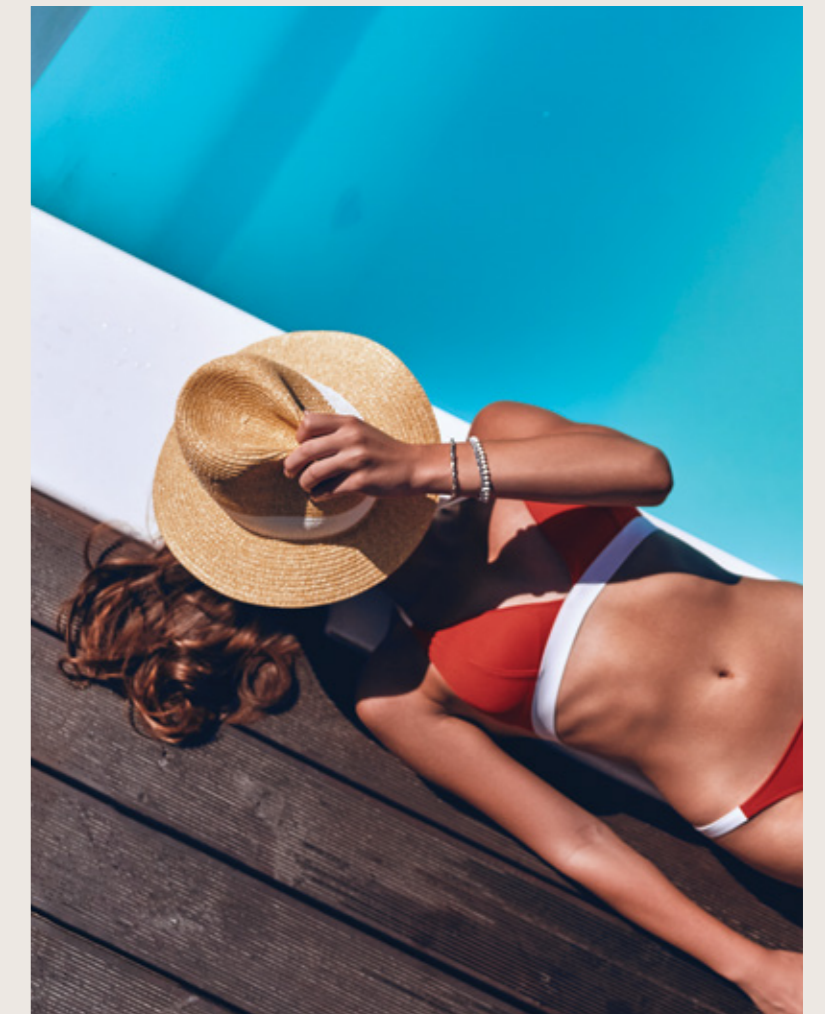
The Green Square area is surrounded by retailers and providores. From fashion houses to designer furniture stores, Green Square has everything for the modern urban dweller. Furnish your new home with contemporary pieces or found treasures from local antique stores.

EVERYDAY CONVENIENCE

Organic food markets and fresh food providores are at your convenience. Replenish your pantry at Taste Growers Market at East Village or the farmers market at Carriageworks. Everyday convenience can also be found at your local green grocer a short stroll away.

GUNYAMA PARK AQUATIC CENTRE

Experience the largest pool complex built in Sydney since the 2000 Olympics. A state-of-the-art centre has been inspired by Sydney's famous ocean swimming spots. Your urban beach awaits with outdoor spaces to relax, a playground, picnic areas and fitness facilities.





ALBA is located in a very central part of Sydney. It is the gateway to many things. A once industrial neighbourhood surrounded by parklands and terrace-lined inner city suburbs. Minutes to Surry Hills, the CBD, Moore Park, Randwick, and Sydney's sparkling beaches.

THE GATEWAY
TO IT ALL



ALBA IS ICONIC SYDNEY



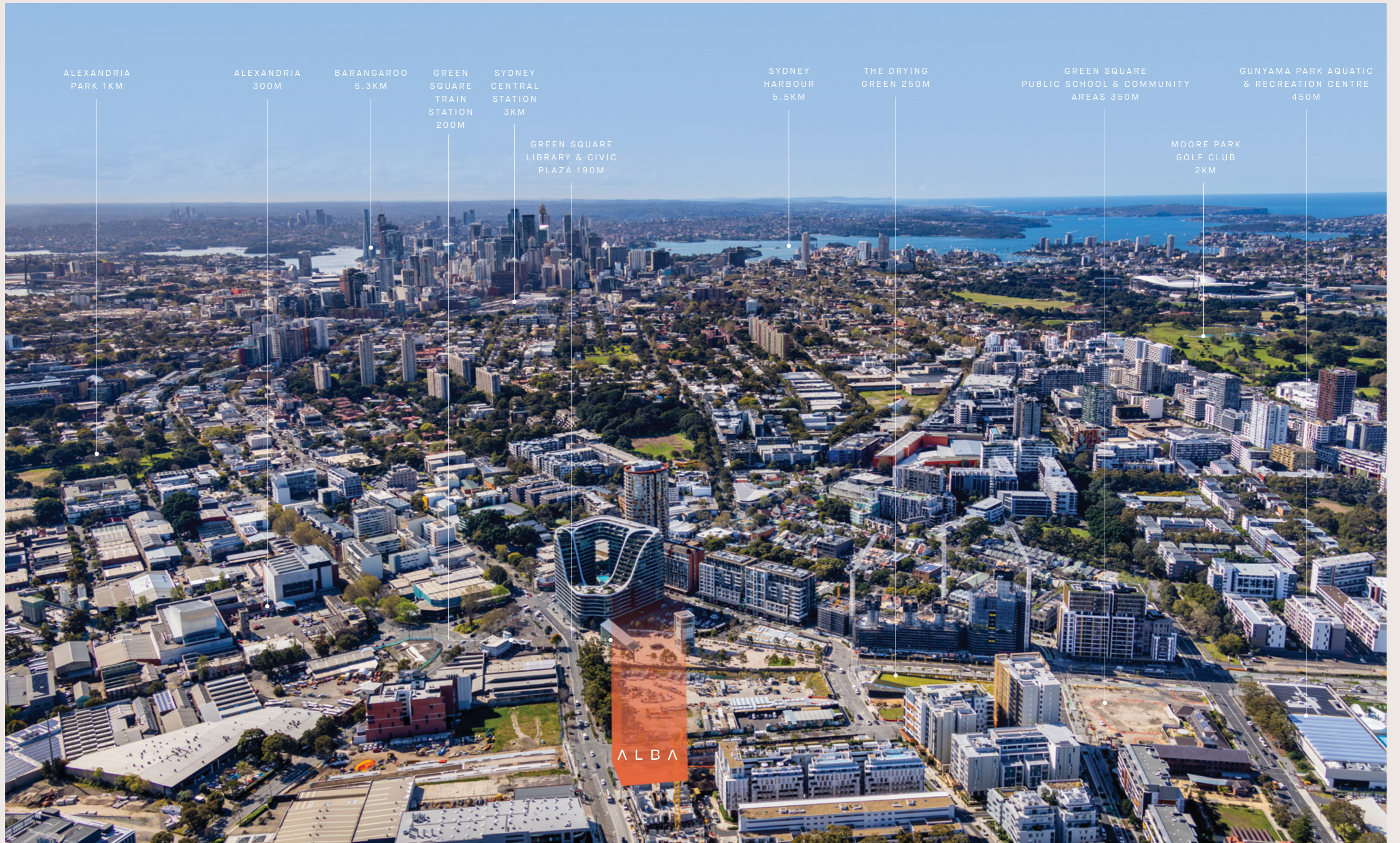
MOMENTS TO SYDNEY'S PARKS AND BEACHES

ALBA is at the heart of it all. Everything from Sydney's CBD and airport to the glittering coastline is only moments away.

The golden-hued sand and crashing swells of the surfing beaches are mesmerising, while the stunning coastal walks and headlands offer incredible views.

Sitting on the world's stage is Bondi Beach, but it's the beaches that sit south of this vibrant spot that are a must-visit. Tamarama, Bronte and Coogee.

After a day at the beach return home through Centennial Park with its sweeping playing fields and beautiful gardens.



ALEXANDRIA
PARK 1KM

ALEXANDRIA
300M

BARANGAROO
5.3KM

GREEN
SQUARE
TRAIN
STATION
200M

SYDNEY
CENTRAL
STATION
3KM

GREEN SQUARE
LIBRARY & CIVIC
PLAZA 190M

SYDNEY
HARBOUR
5.5KM

THE DRYING
GREEN 250M

GREEN SQUARE
PUBLIC SCHOOL & COMMUNITY
AREAS 350M

GUNYAMA PARK AQUATIC
& RECREATION CENTRE
450M

MOORE PARK
GOLF CLUB
2KM

ALBA

TEAM

ALBA IS VISIONARY

A VISIONARY
TEAM CREATING
A LEGACY

VISION BY BRIDGEHILL

Bridgehill constantly explores new ideas to deliver the best property developments without compromising on natural and cultural contexts. Bridgehill has received wide recognition by the industry and accepted important awards on architecture design, building quality as well as developments from organisations such as Master Builders Association of NSW, Urban Taskforce Australia and International Property Awards.

WESTBOURNE CONSTRUCTION

Westbourne are a proud wholly owned Australian company who have just celebrated their 20th anniversary in the home unit construction industry. They have a reputation for on schedule and on budget project completion together with a comprehensive after sales service delivering a seamless transition to the new owner and/or occupier. Westbourne are a specialist residential builder of quality apartments.

MCNALLY ARCHITECTS

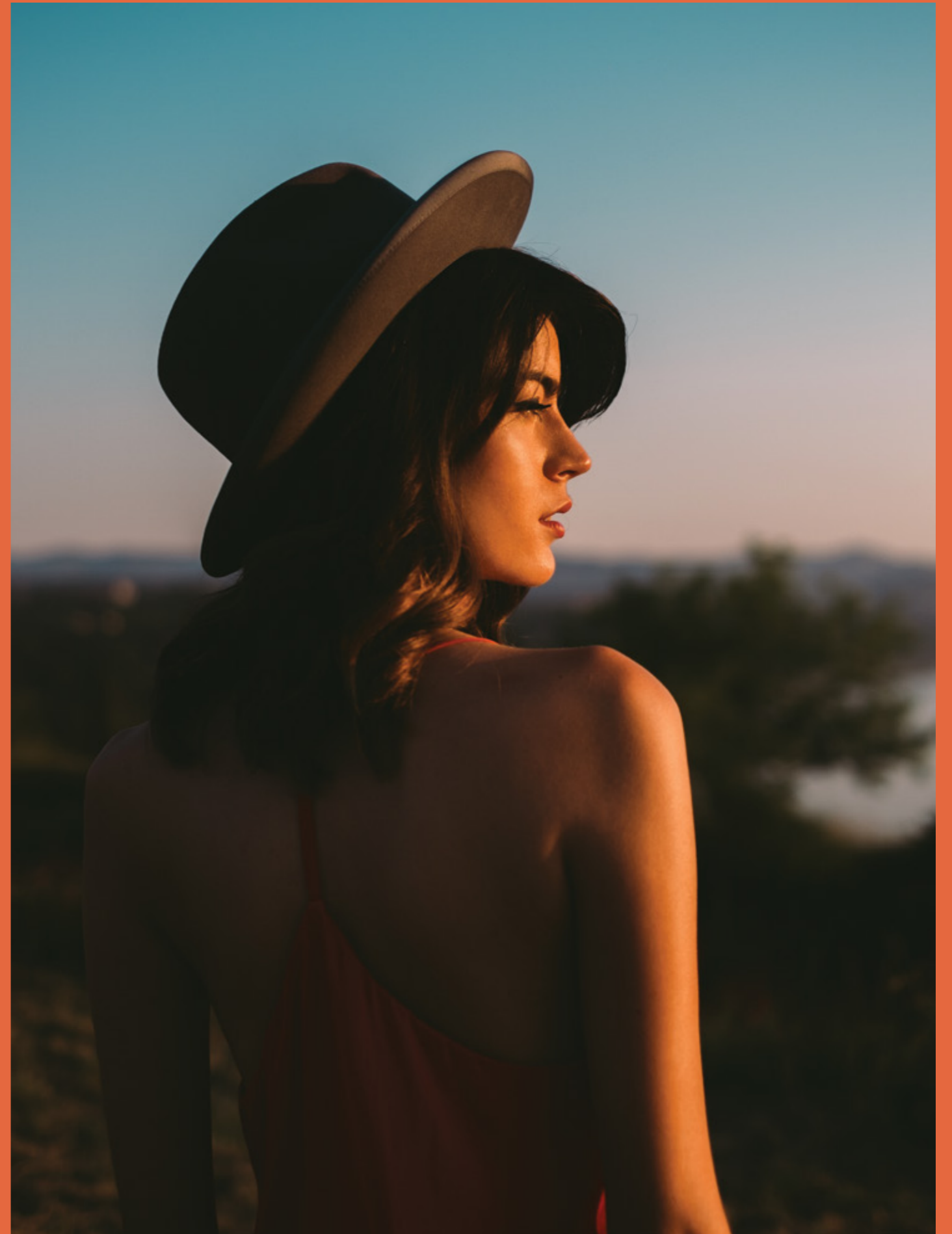
McNally Architects provide innovative design excellence built on solid and experienced foundations. They provide a multi-faceted approach to design solutions, incorporating their extensive and broad knowledge with an intimacy of service that delivers an exceptional, attainable construction solution. They listen, bring passion, quality and commitment to enriching lives and building community.

SISSONS ARCHITECTS

Sissons do architecture differently. At the heart of it, Sissons believe that great design is all about improving our quality of life. They do more than improve efficiency, they create inspired and memorable spaces. Driven by creativity, anchored in logic and driven by process, Sissons combine logic with creativity to make beautiful architecture that nurtures the soul. Creating a place to proudly call home.



ALBA
IS
HERE



ALBA BY BRIDGEHILL
130 ARTFULLY ASSEMBLED APARTMENTS & PENTHOUSES
ALBAGREENSQUARE.COM.AU
1800 899 928



BRIDGEHILL
GROUP

WESTBOURNE



McNally Architects

sissons.



Disclaimer: Colliers International does not guarantee, warrant or represent that the information contained in this advertising and marketing document is current, accurate, reliable or complete. You should make your own enquiries, including obtaining independent professional advice to determine your personal circumstances. Alternatively, we may refer you to any owner of any property we represent for you to conduct your own enquiries. We exclude all inferred or implied terms, conditions and warranties arising out of this document and any liability for loss or damage arising there from.

Brand & brochure artfully assembled by The Property Agency.



BRIDGEHILL
GROUP