



Eden 30 - Eclipse

Box Hill

Completed Home

Land Size: 445m²

Luxury Inclusions:

- * Fixed site costs & BASIX requirements
- * 2600mm ceilings to ground floor
- * 40mm stone benchtops to kitchen & 20mm to vanities
- * Designer polyurethane kitchen with glass splashback & butler's pantry
- * 900mm Westinghouse stainless steel appliances incl. gas cooktop, dishwasher, oven & externally ducted rangehood
- * Semi-frameless shower screens, wall hung vanities & freestanding bath
- * 600x600mm Porcelain tiles throughout including full height tiling to bathrooms
- * Carpet floor coverings to bedrooms
- * ActronAir ducted air-conditioning System
- * LED Lighting throughout & security alarm system
- * Automatic garage door with remotes
- * Flyscreens to operable windows including roller blinds
- * Coloured concrete driveway
- * Full landscaping: turf, planting, fencing & retaining wall

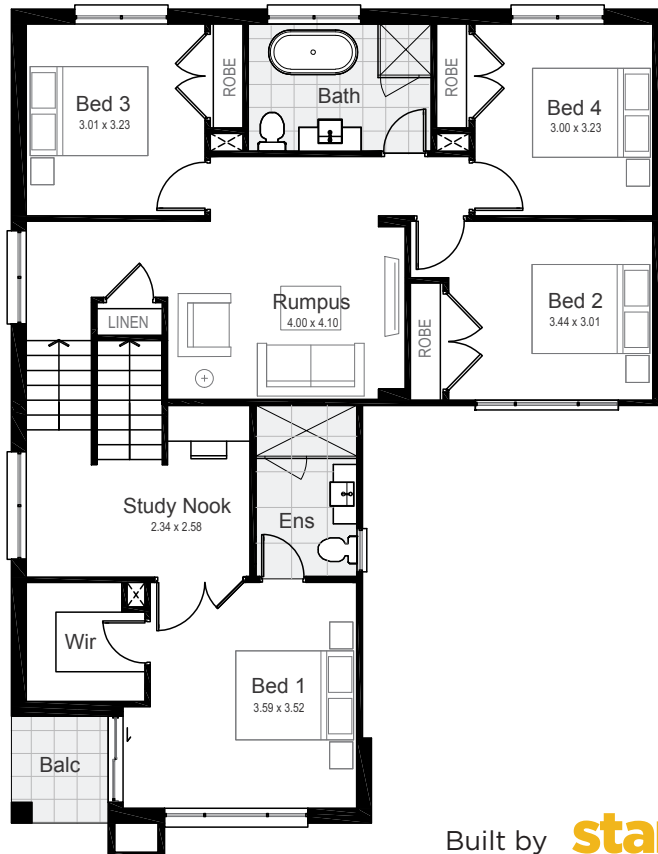


Box Hill

 4
  2.5
  2



Ground Floor



First Floor

Ground Floor	103.58 m ²
First Floor	113.59 m ²
Garage	41.22 m ²
Porch	2.93 m ²
Alfresco	9.15 m ²
Balcony	2.93 m ²
Gross Floor Area	273.40 m²

© *All drawings and photography are for illustrative purposes and should be used as a guide only. Star Homes reserve the right to withdraw packages, revise plans, specifications and pricing without notice or obligation. Copyright of plans and documentation used by Star Homes shall remain the exclusive property of the producing or authorised entity unless a license is issued otherwise. This house and land package is inclusive of GST. Star Homes have made all reasonable efforts to ensure the accuracy of this package flyer. It is recommended that the purchaser make their own enquiries in relation to this product offering and review their tender documentation with due care. Information and pricing are correct as at 29 October 2022. Changes can be accommodated to the package as requested by the purchaser subject to permissibility, however any changes as directed by the purchaser will be at their own cost. Star Homes ABN 35 602 963 502. Builder's Licence 290700C.

Built by **star**homes