



An emerging
suburb where
new stories unfold
Centennial Homestead
UNSW
The Spot Randwick
Moore Park Golf
Randwick Races
Paddington Markets
Prince of Wales Hospital
The
Kensington
by Toga
Brand new
designer apartments
crafted for living

The Kensington

ANZAC PARADE

thekensington.com.au
02 9191 3916



Love this place

Welcome to The Kensington, a premium collection of 1, 2, 3-bedroom and SOHO apartments, crafted to perfection, in one of Sydney's most connected neighbourhoods.

From the moment you step inside you'll be enthralled by The Kensington's generous floorplans, with free-flowing spaces opening up to alfresco living and architectural touches that maximise natural light and airflow.

This gateway to the Eastern Suburbs puts you within easy reach of parklands, coastline and the city, offering truly the best of everything. Make your home at The Kensington, and discover urban living at its finest, in a place you'll love.

An elevated outlook

Take in the beauty of The Kensington's pristine rooftop loft for the exclusive use of residents and their guests. With its travertine floor tiles, comfortable seating, picturesque views and high-style surrounds, discover your own slice of serenity in the heart of the vibrant Eastern Suburbs.





Wicks Place Marrickville by TOGA is an exciting new urban precinct combining premium apartments, shopping, dining and tranquil green space with inspired architecture and thoughtful design.



Encompassing luxury residences and vibrant retail, TOGA's Surry Hills Village is a place where imagination, history and architecture combine, to become the new heart and soul of Sydney's inner city.

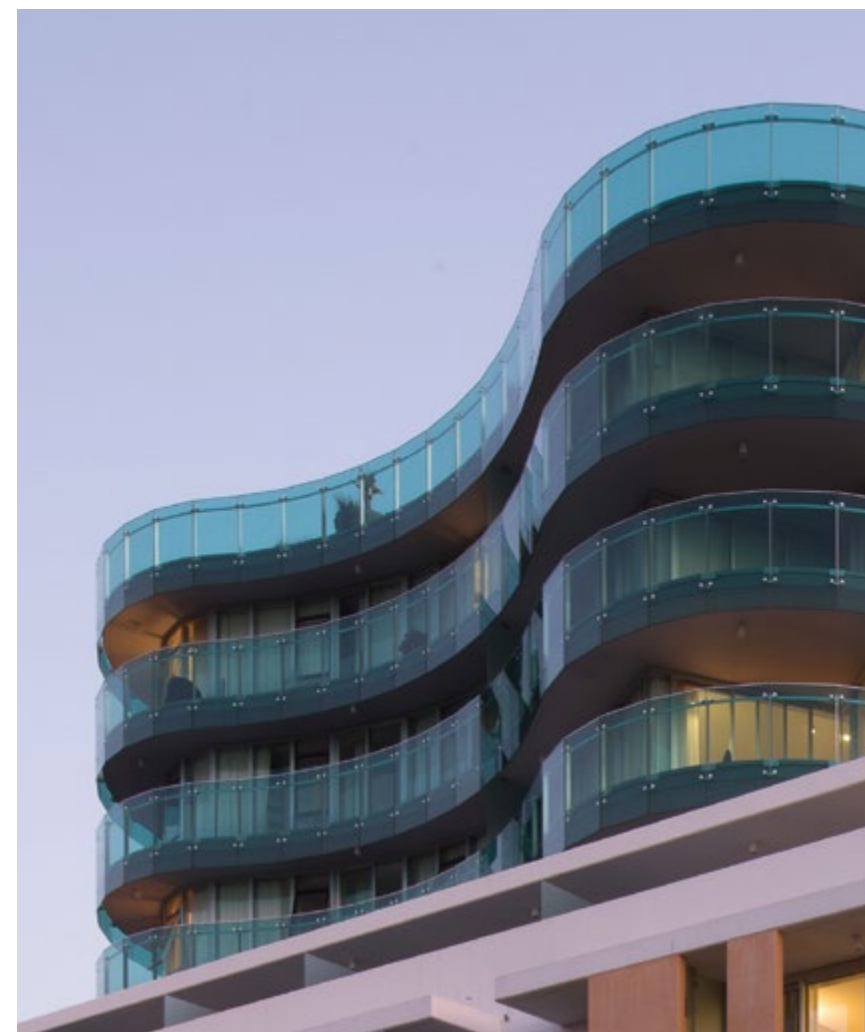


TOGA's Harbourfront Balmain combines the beauty of living on the harbour with the luxury of exquisitely crafted apartments, replete with spectacular water views, designer features and lavish amenities including fully equipped gym and harbourfront pool.



The award-winning Boheme in Bondi Beach reflects TOGA's unwavering commitment to inspiring design that enriches communities.

Creating the next great place



TOGA
ESTABLISHED 1963

With almost 60 years of experience as one of Australia's leading, fully-integrated property developers, TOGA is the name behind some of the country's most exceptional projects including the award-winning Bondi Boheme, Harbourfront Balmain and Jones Bay Wharf.

Family-owned and founded in Australia in 1963, TOGA's commitment to making a positive impact runs deep. We believe in creating meaningful spaces for life, building places that bring joy, enhance living and elevate experiences, to enrich our communities and the lives of our residents. Going beyond best practices in design and construction, TOGA's considered approach to

developing and building, puts its people at the heart of each process. Our passion for delivering comfort and quality is resolute. We collaborate with some of Australia's most esteemed architects and designers to bring fresh residential perspectives, resulting in places defined by exceptional quality, integrity and long-term value.

No place like Kensington

Step outside into a colourful neighbourhood full of life. Kensington is the last enclave in the Eastern suburbs; a vibrant place which embodies comfort, convenience and connection. The area is defined by its state-of-the-art health and education precincts with exceptional shopping, dining, sports and entertainment just a few

minutes away including Randwick's upscale retail and racing, Moore Park, Sydney Cricket Ground and The Entertainment Quarter. That's in addition to Kensington's enviable proximity to nature, encompassing numerous parks, beaches, and recreational facilities, making it one of Sydney's most enticing suburbs.





Generous proportions for everyday living

Understated luxury meets uncompromising quality in The Kensington's chic living spaces, built for your comfort. Timeless beauty is defined by curved edges and a classic palette, making way for designer accents where no detail has been spared. With its generous open plan layout, enjoy an amplified sense of space that seamlessly flows from indoor to outdoor living.

Light, bright, and airy, these contemporary homes are crafted for contentment. Oversized windows are flooded with natural light, while sheltered balconies protect you from the elements. The understated style of The Kensington's exceptional spaces provides the perfect canvas for you to instil your personal touches, creating a haven you'll love for life.

The heart of your home



The Kensington's designer kitchens embody style, form and function, merging quality appliances with luxury features for effortless urban living. Beautifully designed for hosting family and friends, the open-plan layout spills into the lounge and dining area, seamlessly integrating cooking and socialising to become the beloved heart of your home.

Crafted with the highest quality materials, this dual-purpose setting is an entertainer's delight. With an expansive stone bench top and clever use of storage space, every room at The Kensington is a reminder of its many thoughtful elements, created for your comfort.



Expansive views and quiet corners

Start and end every day on your private terrace and you'll understand what it means to feel completely recharged. Gaze out to peaceful views over the treetops and across to the city skyline. Take in the breeze, feel the sunlight on your face and enjoy this calming space which extends outwards from your integrated living areas. In rain or shine you'll be

protected from the weather while benefiting from the flow of natural breeze. It's an effortlessly flexible space that adapts to accommodate your lifestyle. Take your work alfresco, or find focus indoors at your purposeful home office space. It's just another benchmark of The Kensington's intuitive aesthetic, dedicated to excellence and crafted for the future.



Retreat to your private oasis

Sink into your peaceful bedroom hideaway; a calming oasis in which to wake refreshed and recharged. Making clever use of the layout, enjoy oversized built-ins and huge windows that flood your space with Sydney's exquisite sunlight. Large sliding doors open out to your

leafy private balcony, providing the perfect breezy setting from which to begin the day. An elegant colour palette merges muted tones with chic design features including exposed brick and pristine timber floorboards; elegant accents with a contemporary twist.





Luxurious finishes throughout

From sleek design and premium accents to elegant finishes including travertine floor tiles and stone basins, the bathrooms at The Kensington have been crafted to reflect understated luxury and timeless style.

Making clever use of storage space, enjoy an oversized shower and double basin. Whether you prefer to take your time or prioritise efficiency, this bathroom adapts to your lifestyle, with ease.



Work life balance



THE KENSINGTON BY TOGA
KENSO
2033
LOVE THIS PLACE

→

Kensington is home to plenty of four-legged friends, and provides numerous parks and walking paths for stretching your legs.

↓

Step away from your desk and immerse yourself in the natural beauty of Centennial Park.



Work life balance means taking care of yourself. The Kensington's SOHO Apartments make it easy. Purpose-built residential offices provide an exceptional place to focus, while the vibrant thrum of the surrounding neighbourhood with its restaurants, cafes and coastal walks offer all the support you need.

The Kensington's purpose-built SOHO Apartments have been crafted to adapt to the future. Discover welcoming spaces that accommodate your busy lifestyle, in a place where tranquil home life meets the focused home office. The ways in which we live and work are changing, and these dual-purpose havens will set you up for success.

↑

A wealth of restaurants and cafes on your doorstep will ensure you're well-nourished, whether you're taking a break for lunch or meeting a colleague for a coffee.

→

Randwick's Ritz Bar is the perfect place to meet clients, with its crowd-pleasing menu and attractive balcony space.





↑

Nick Turner is the principal and founder of the multi-award-winning architectural design practice, Turner Studio, with over 20 years of experience designing exceptional projects in Australia and globally.

→

Allan Vidor is the Managing Director of the Toga Group of Companies, encompassing property development, construction, investment and hospitality management. He graduated from the University of NSW with Bachelor of Commerce and Laws degrees in 1985 and was admitted as a Solicitor of the Supreme Court of NSW in 1986. With extensive experience in the banking and finance sector, he is responsible for the TOGA Group's strategy and operations.



→

Founded by Jonathan Richards and Kirsten Stanisich, Richards Stanisich is a multidisciplinary interior design and architecture practice working across the retail, residential, hospitality and commercial sectors, creating interiors that intentionally make people feel good.

Meet the makers



A dream team of award-winning property developers, architects and interior designers have come together to create The Kensington, resulting in the residential embodiment of style and quality.

The partnership between property developer TOGA, architect Turner Studio and interior designer Richards Stanisich hinges on a shared vision, to create a meaningful residence defined by comfort and quality with an elegant aesthetic crafted to last. Turner's projects are known for their volume, size and complexity. The places they design are renowned for being both responsive and memorable, with a strong identity that reflects a familial approach to enhancing the urban environment.

The Kensington's strong sense of style beautifully reflects Richards Stanisich's approach to developing design by innovating with materials and detailing. Both Jonathan and Kirsten value originality, with a leaning towards sophisticated palettes, aesthetically beautiful features and above all, a relentless pursuit of elegant, refined results.

An emerging
suburb

A new place
to live

A new place
to love

Your eastern
suburbs gateway
New neighbours,
friends, parks,
golf course, cafes,
shops, beaches
There's no place
like Kensington

Race Day
 Restaurants
 UNSW
 Centennial Park
 Lightrail
 Moore Park
 The Ritz
 Coogee Beach
The Kensington
 1, 2, 3 bedroom
 and soho
 Designer homes
 Crafted for living
 Love this place



Experience the thrill of spectating some of Sydney's most exciting live sport matches at the 48,000-seat stadium of the Sydney Cricket Ground.



Head to one of Sydney's best public golf courses and perfect your swing in the picturesque surrounds of Moore Park Golf Club, just one of several golfing facilities near Kensington.



There's no place
 like Kensington

Kensington transformation

Kensington's star is on the rise as major investment sees the neighbourhood evolve. New infrastructure, amenity overhauls and vibrant new precincts will elevate the area like never before.

Randwick City Council's \$300 million plan to revitalise Anzac Parade from Kensington to Kingsford will include eight new plazas, expansive public spaces and wider footpaths, 15 pedestrian links, separate bicycle ways, a multipurpose community centre and extended car parks.



Extending from Circular Quay and branching from Moore Park through Kensington to Kingsford, the L3 Kingsford Line, courtesy of the new CBD and South East Light Rail ensures commuter can rely on high-capacity, clean transport to get where they're going in minutes.



A centre of major medical and educational institutions, Kensington has a well-established apartments market, driven by its proximity to the CBD, infrastructure investment, employment, education, health and recreational amenity.



The greatly anticipated UNSW Health Translation Hub, a 15-storey clinical health, education and research building located at UNSW is expected to complete in 2025.



Effortless proximity to many of Sydney's major employment hubs including the CBD, Randwick's state-of-the-art health and education precinct, and Bondi Junction, will see record employment growth over the next few years, bolstering Kensington's appeal as a place where exciting things are happening.





↑
Some of Sydney's most beautiful beaches including Coogee, Clovelly and Bondi are only a short distance from your door.

↑
Enjoy the convenience of transport on your doorstep. Kensington's light rail is served by the L3 Line and connects residents between Kingsford and Sydney CBD as well as a network of bus lines connecting to the CBD and Eastern Suburbs.

→
Experience a wide variety of cuisines from cafes and pubs to elevated dining in the many nearby eateries.



Your eastern suburbs gateway



→
A wealth of pristine parks will inspire an active lifestyle in the great outdoors.

Situated just 4km south of the Sydney CBD, Kensington provides an attractive coastal lifestyle with all the spirit of an inner-city neighbourhood.

Surrounded by a bustling arts, culture and dining scene, it's a place infused with an uplifting energy; a future-facing neighbourhood with a connected community at its heart. But it's Kensington's location as an Eastern Suburbs gateway that makes it such an enticing gem. Within close proximity you have access to the sparkling sands of Coogee, Clovelly and Bondi.

There's also Randwick's upscale shopping, dining and racing; Moore Park's sports and entertainment precinct; state-of-the-art health and education; the wild beauty of Centennial Parklands. With both urban convenience and the tranquility of nature at your door, Kensington truly offers the best of everything.

Say hello to a few of your new favourite things



From the crashing of waves to the sensation of soft sand beneath your feet. Kensington's location near some of Sydney's most beautiful beaches including Coogee, Clovelly and Bondi is one of the many reasons locals love where they live.

MOMENTS AWAY FROM THE OCEAN

Coogee Beach
4.9 km



Immerse yourself in the invigorating waters of the area's numerous ocean baths, from Coogee Baths to the ocean and rock pools at Clovelly. Or head to Coogee's famed Wylie's Bath, one of Sydney's oldest and most beautiful ocean tidal pools.

SEASIDE HERITAGE

Wylies Bath
5 km



Merivale's Coogee Pavilion houses a collection of exceptional bars and eateries, set to a backdrop of sweeping ocean views. Find casual family dining on the ground floor, or head upstairs for fine dining and on the rooftop, four indoor and outdoor bars keep the drinks flowing as the waves crash below.

BEACHSIDE DINING

Coogee Pavillion
4.7 km



From pristine turf to the thunder of hooves, Royal Randwick Racecourse is a theatre of world-class racing, dining, retail and fashion, just a short walk from your door. Or experience life at the pace of a gentle trot, and view the world on horseback at Centennial Parklands Equestrian Centre.

NO PLACE LIKE KENSINGTON

Royal Randwick Racecourse
850 m



Surrounded by recreational facilities from tennis courts to golf clubs, Kensington inspires an active outdoors life. Rather be a spectator? Sydney Cricket Ground and The Entertainment Quarter are both nearby along with Kensington Oval, a popular venue for local cricket and rugby teams with a grandstand for optimum spectating.

PARKS AND RECREATION

Moore Park Tennis Courts
2.2 km

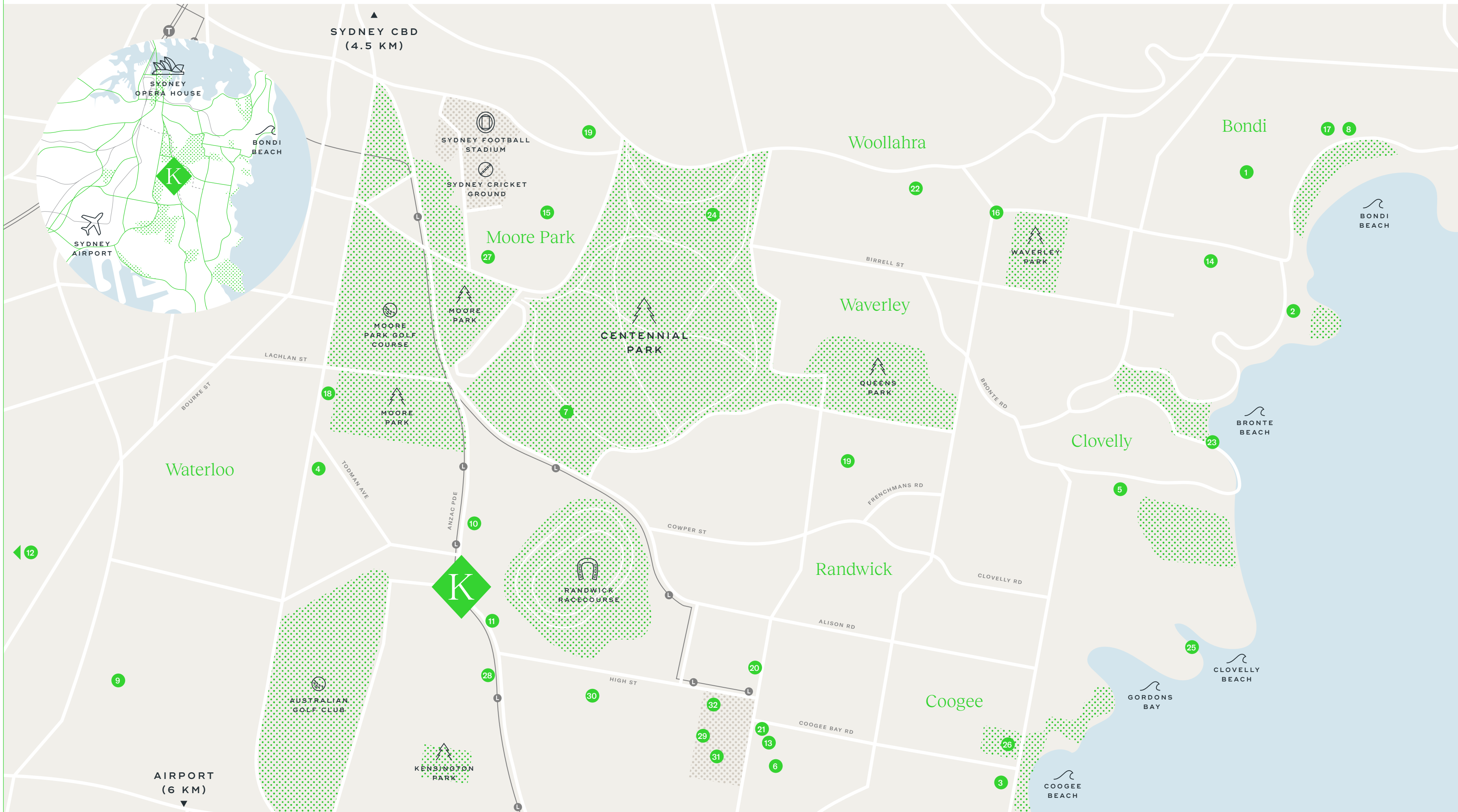
New Neighbourhood

Become a Kensington local and discover the vibrant pace of this eclectic neighbourhood. Immerse yourself in the area's rich dining culture, take your pick of the East's best beaches or surround yourself with nature in Centennial Parkland's 189-hectare oasis, where beauty abounds in every corner from picturesque ponds and gardens to bright expanses of green.



Welcome home

It won't take long for you to discover the secret that Kensington locals have long kept: this emerging neighbourhood is set for great things. The last enclave of the Eastern Suburbs, Kensington is a jewel, offering community, connection and convenience. Providing an abundance of natural beauty, recreation and relaxation, business and employment hubs, award-winning health and education, retail, dining, sports and entertainment, at The Kensington, you really can have it all.



New neighbourhood

Dining / drinking

- 1. Bills Bondi
- 2. Bondi Icebergs
- 3. Coogee Bay Hotel
- 4. East Village Shoppig Centre
- 5. Iggy's Bread
- 6. Maybe Frank
- 7. The Greenhouse
- 8. North Bondi Fish
- 9. Three Blue Ducks Rosebery
- 10. Stable Talk
- 11. The Doncater
- 12. The Grounds
- 13. The Ritz
- 14. Tottis Bondi
- 15. Urban Winery

Shopping

- 16. Bondi Junction Retail Precinct
- 17. Bondi Markets
- 18. Moore Park Supa Centa
- 19. Paddington Markets
- 20. Royal Randwick
- 21. The Spot, Randwick
- 22. Westfield Bondi Junction

Entertainment

- 23. Bronte Baths
- 24. Moonlight Cinema
- 25. Clovelly Ocean Pool
- 26. Coogee Oval
- 27. Entertainment Quarter

Education / work

- 28. NIDA
- 29. Prince of Wales Hospital
- 30. UNSW
- 31. Prince of Wales Private Hospital
- 32. Prince of Wales Children's Hospital

- Central Station
- Light Rail Stops
- Light Rail
- Train Line
- Parks & Green Space
- Water

The Kensington

ANZAC PARADE

 TOGA
ESTABLISHED 1963

Design by The Property Agency

Disclaimer: 1. No person is entitled to rely on any information, representation, projection, advice, opinion or other statement in this brochure. 2. This brochure was prepared before completion of construction of the development and includes indicative information only. 3. The photography and images of the landscape and landscape elements, buildings and home interiors are indicative only. 4. The actual final installed materials and finishes may differ from the indicative materials and finishes shown in any photography or images in this brochure. 5. Changes may be made during the development, with or without notices to purchasers, including changes to materials, dimensions, fittings, finishes and specifications. 6. Toga Pty Ltd and its related bodies corporate (TOGA Group) and their officers, directors, employees, representatives and agents do not represent, warrant or guarantee that any aspect of this brochure is accurate. 7. Prospective purchasers must make and rely on their own enquiries. 8. This brochure is only a guide and does not constitute an offer or agreement. 9. TOGA Group and its officers, directors, employees, representatives and agents do not accept any responsibility or liability whatsoever for any loss, damage or claim whatsoever in connection with any information, representation, projection, advice, opinion or other statement provided, including in or by this brochure, any model, any display suite and any other marketing material.

thekensington.com.au
02 9191 3916