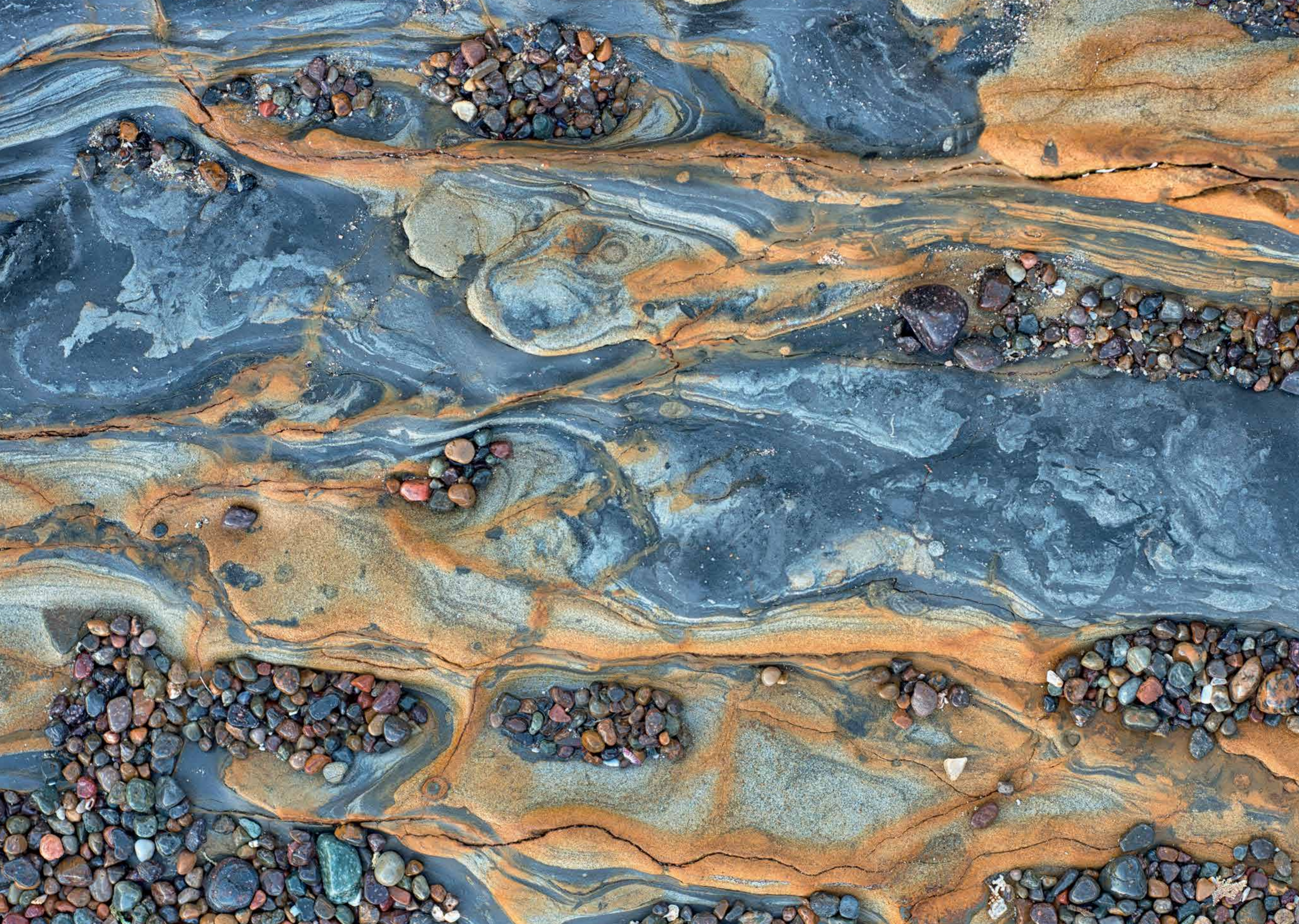
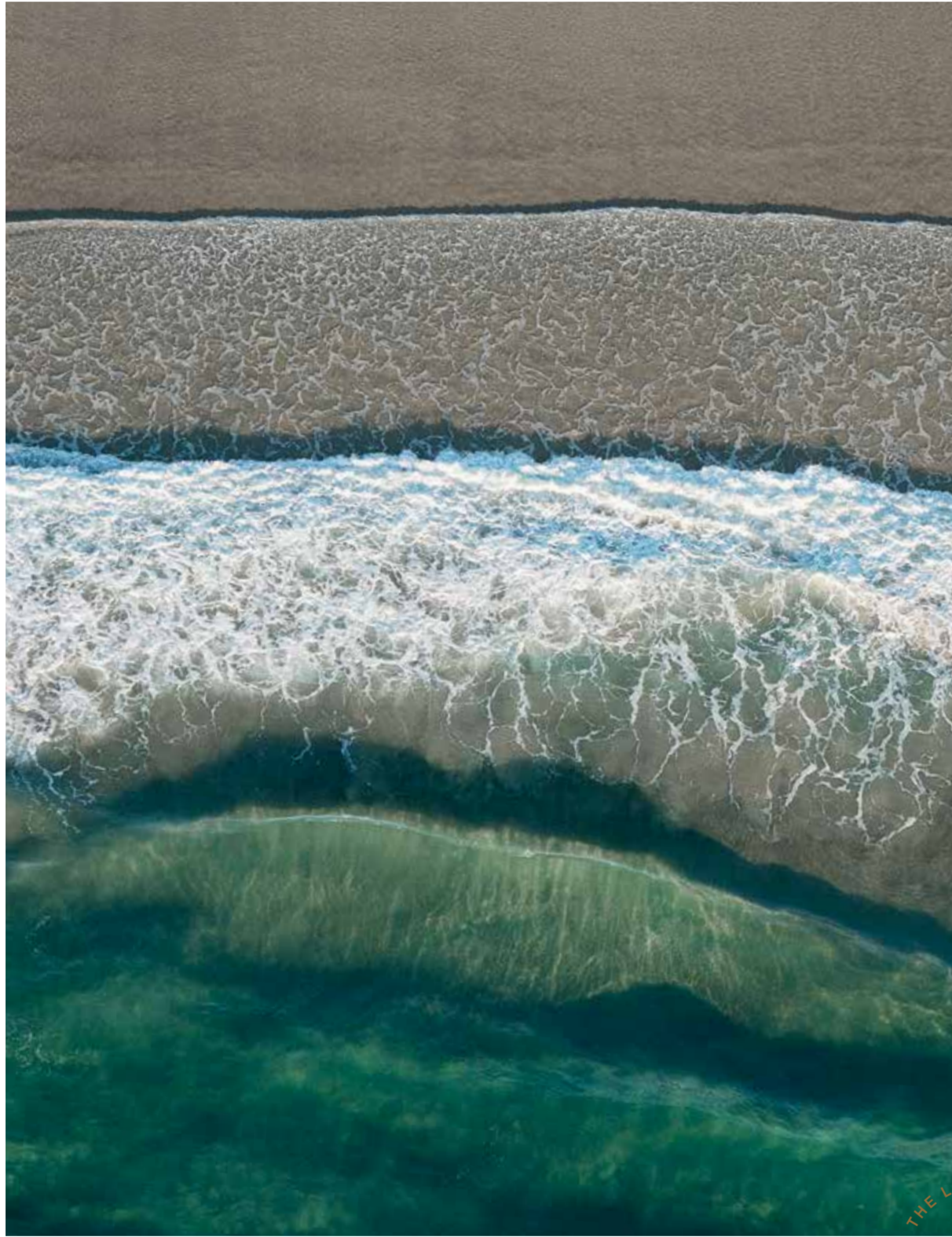




THE
LANDMARK

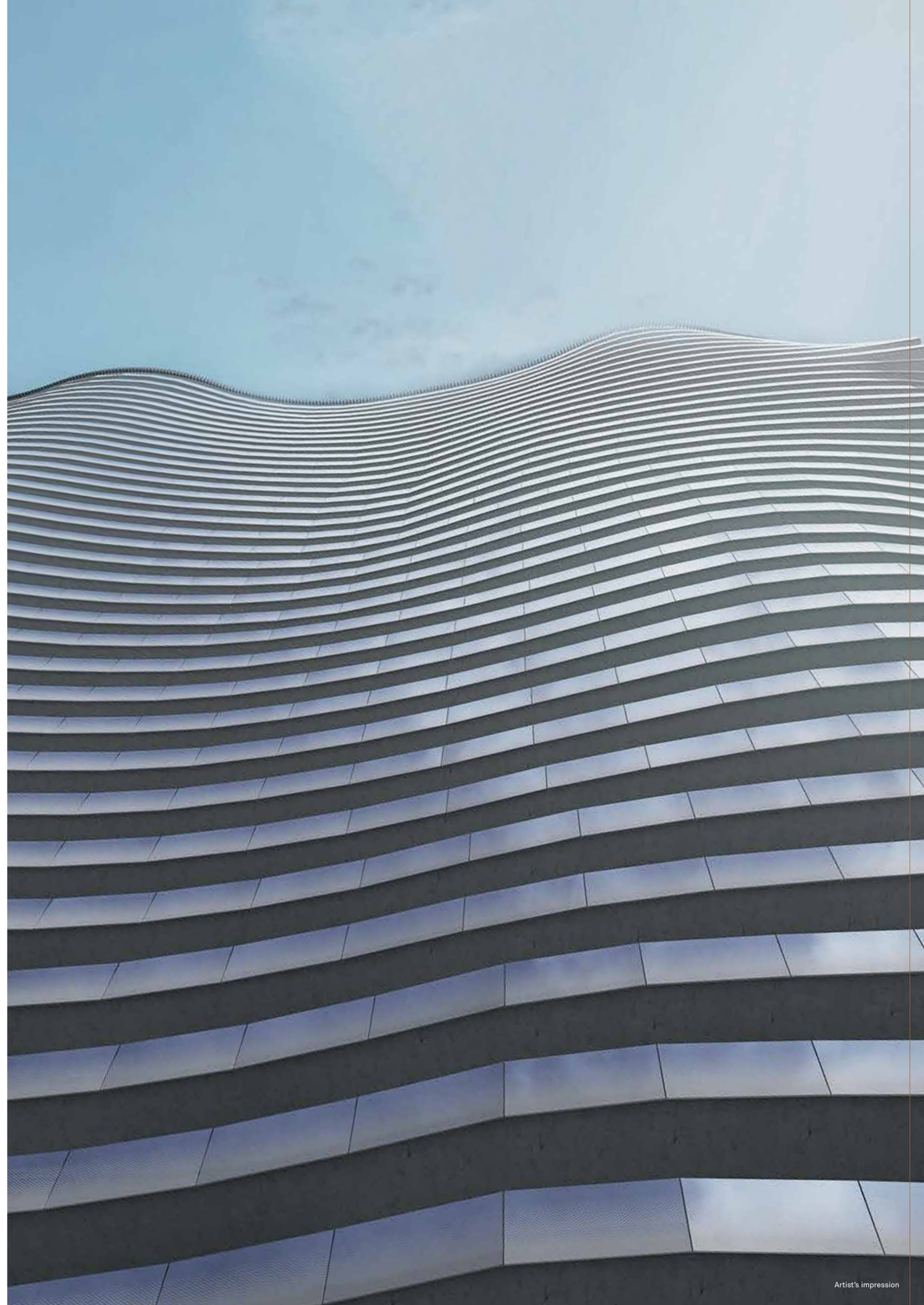
ST LEONARDS SYDNEY

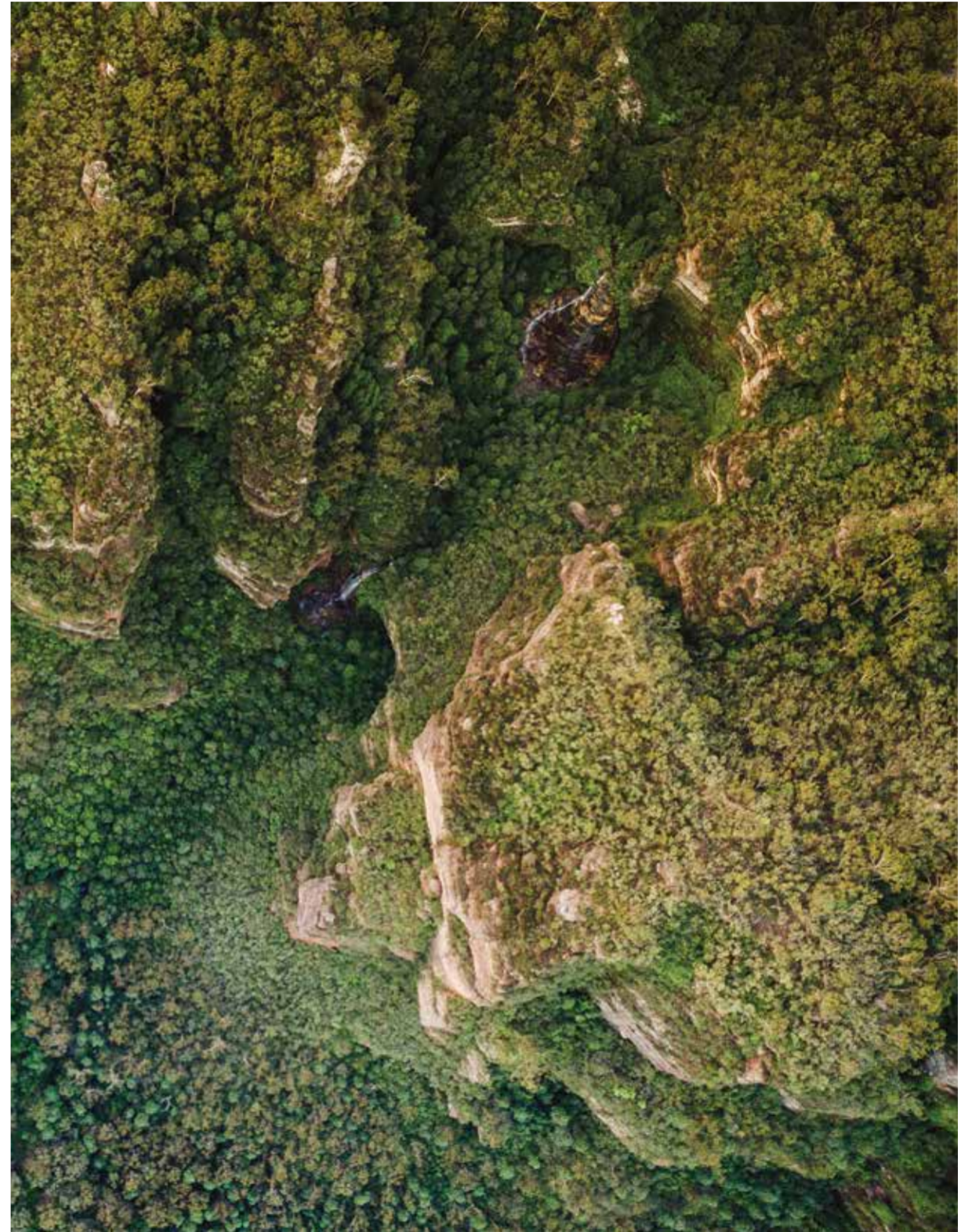




FLOWING

The azure water and ripples of Sydney Harbour are mirrored in the signature waves and shifting angles of The Landmark's design. Embodying the essence of Sydney, this is statement living at its finest.





LAYERED

From every angle, The Landmark has been guided by the surrounding native landscape and geology, integrating seamlessly with open green spaces that form a lush foundation for all.



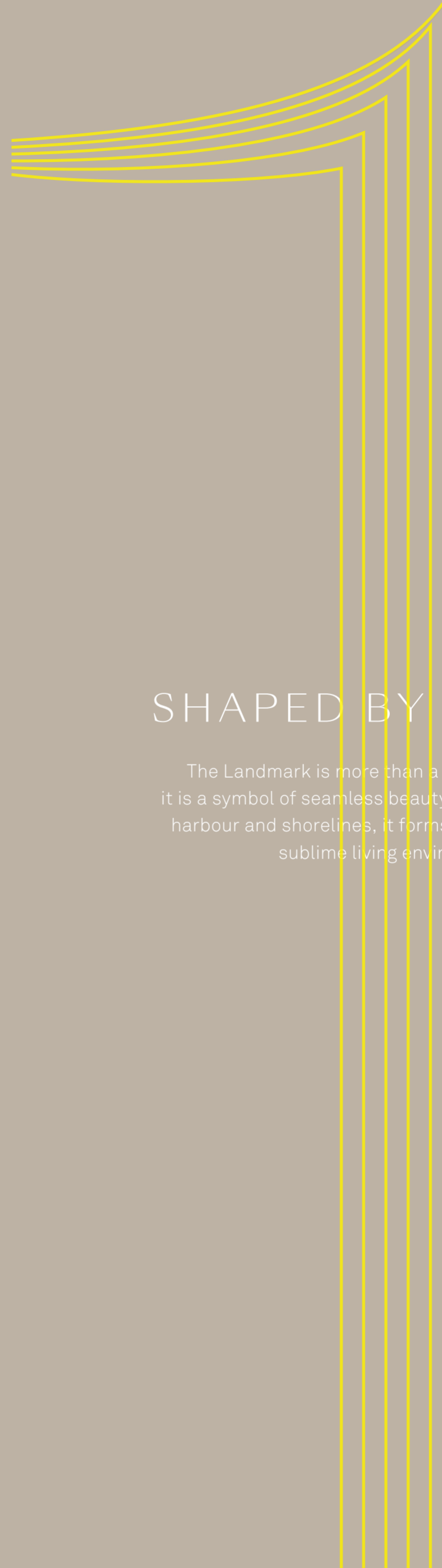
ENDURING

A dedication to timeless beauty and quality is echoed in every aspect of The Landmark, resulting in spaces with style that stands the test of time.



SCULPTED
FROM SYDNEY





SHAPED BY NATURE

The Landmark is more than a place of residence; it is a symbol of seamless beauty. Inspired by Sydney's harbour and shorelines, it forms a stunning icon and sublime living environment.

INSPIRED BEAUTY.
ENDURING ELEGANCE.



DESIGN



“

THE LANDMARK EMBODIES THE NATURAL GIFTS AND BEAUTY OF SYDNEY AND ITS HARBOUR

Tony Leung, CEO, a+ design group



Setting a new benchmark in Sydney living, The Landmark will be a true vertical village, offering unprecedented amenity amidst sublime style. In recognition of its excellence, the design was awarded Gold for Best Proposed Architecture at the Sydney Design Awards.

Inspired by the water surface of Sydney Harbour, its colours and ever-changing reflections of city and sky, The Landmark exudes a fluid yet powerful presence. Rising an impressive 138 metres, its undulating façade is both aesthetically and intelligently designed. Every wave and level responds dynamically to its surroundings, integrating with the living spaces of each apartment. Every floor is different and every balcony is unique, widening at the optimum point to capture and accentuate the best possible views of the harbour it reflects.

A continuous glass balustrade wraps around the entire façade, creating a purity of form, simultaneously complementing and merging with the surrounding context. Aluminium and stone cladding embrace the lower levels while landscaping provides green relief, grounding the building at street level.

Over the course of his 20+ years of masterplanning, urban strategy and architectural experience, Tony has been consistently driven to create architecture that is both unique and forward-thinking. His work is known for its clarity of intent and resolution, and The Landmark is no exception: an extraordinary piece of architecture that beautifully amalgamates art and design.



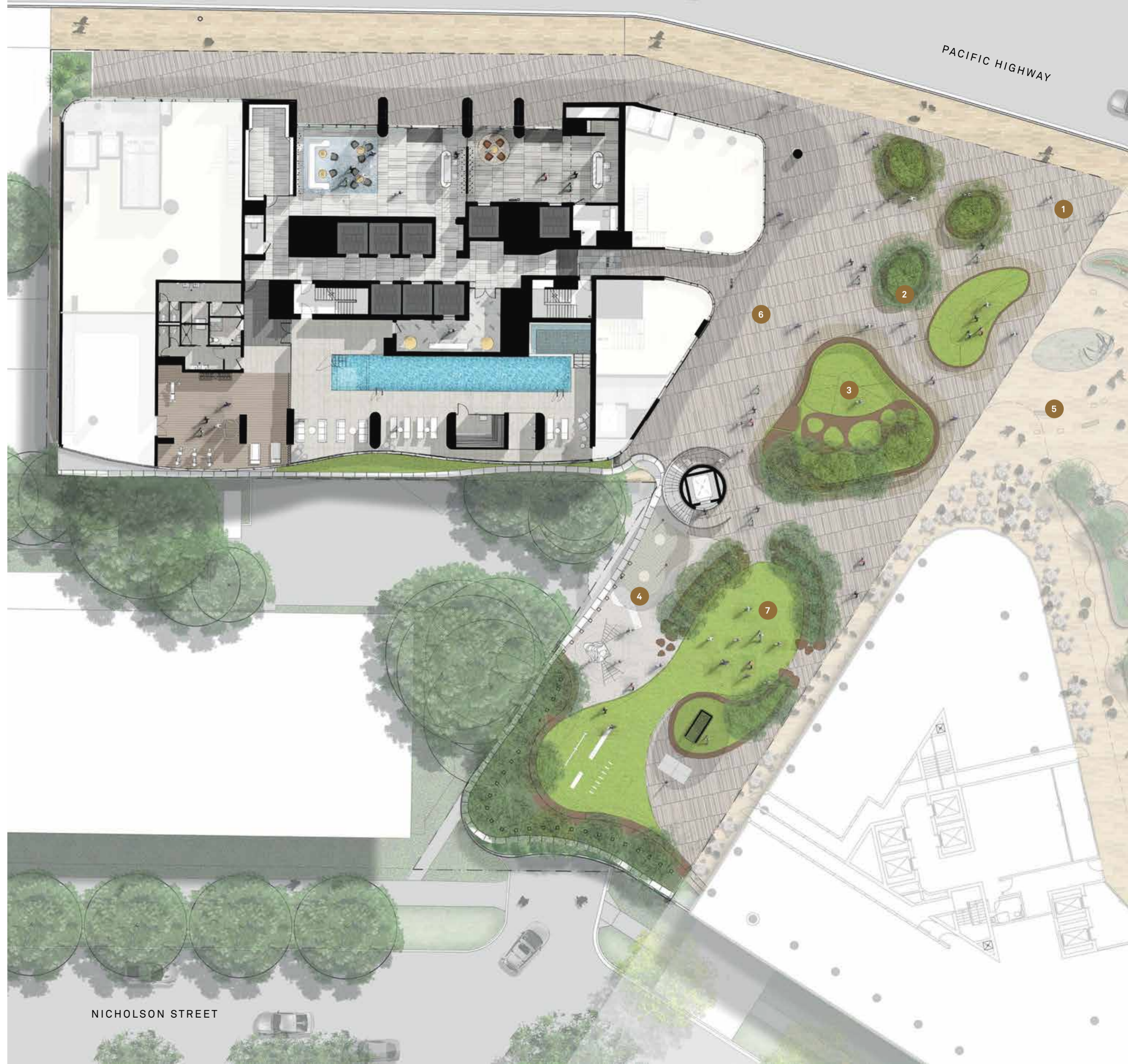
MASTERFUL DESIGN

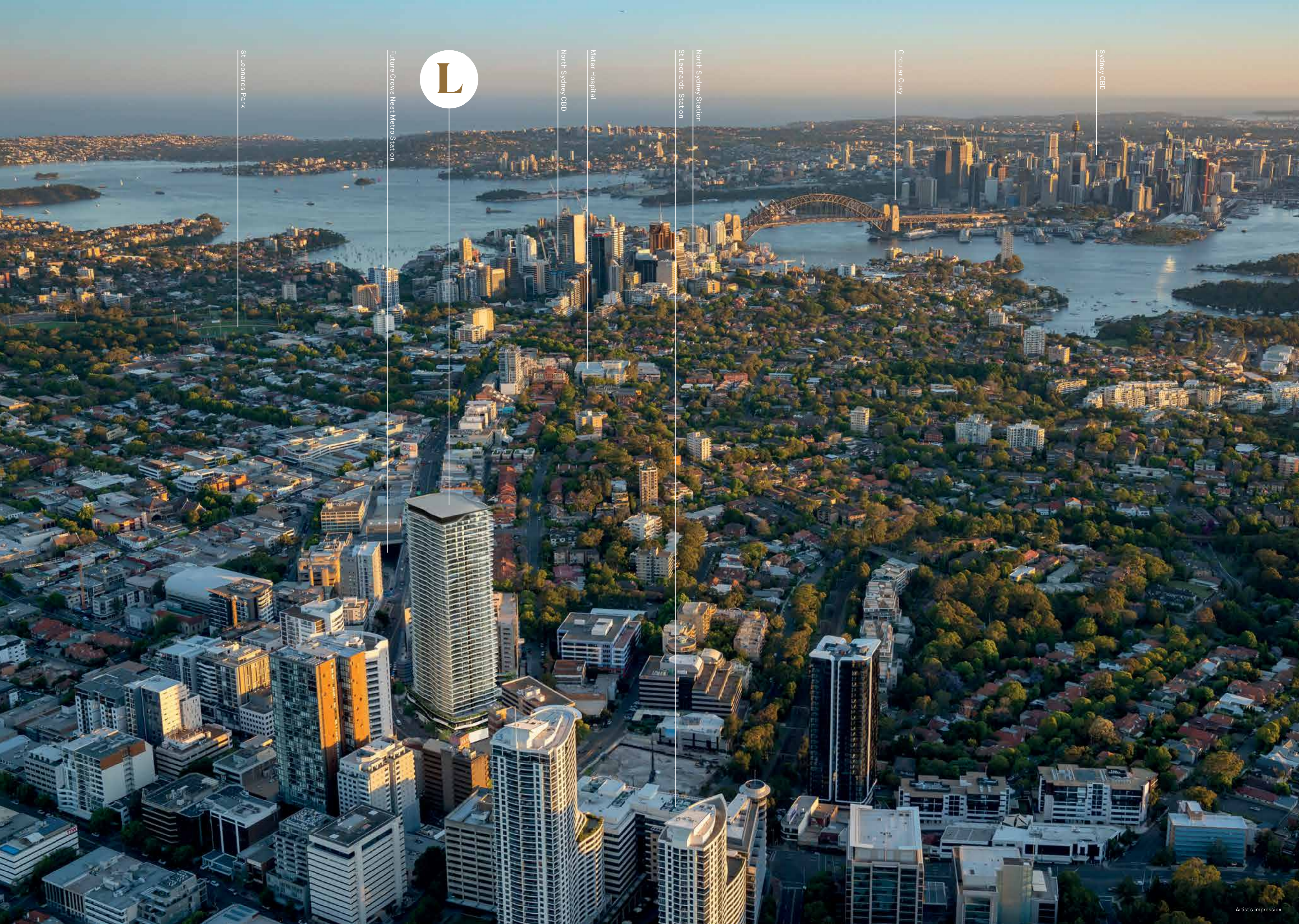
St Leonards is evolving into a dynamic and active destination to live, work and visit. At the heart of this transformation is a vibrant precinct vision, Friedlander Place, with The Landmark as its elegant centrepiece.

Integrating with the landscape, The Landmark masterplan is designed to create a compelling and cohesive community experience embedded in Friedlander Place — 1,600m² of open space, pocket parks, water features, new transport connections and an array of al fresco restaurants and boutique retail. All just moments from your door.

THE LANDMARK

1. Open interface with Pacific Highway creates maximum visual connection and street presence for Friedlander Place
2. Raised planters with mature tree planting
3. Raised turf terrace with steps and seating edge
4. Adventure play space
5. Forecourt plaza to adjacent residential development
6. Active café and retail frontages
7. Durable artificial turf





St Leonards Park

Future Crows Nest Metro Station

L

North Sydney CBD

Mater Hospital

St Leonards Station

North Sydney Station

Circular Quay

Sydney CBD



CARVED FOR THE SKY

Open and expansive, The Landmark residences are uniquely shaped to create an incredible connection to Sydney's magnificent skyline.



PURE SANCTUARY

STUDIO, 1 & 2 BEDROOM RESIDENCES

Residences have been intelligently designed to provide abundant space, enhanced by expansive floor-to-ceiling views. Lofty ceilings, private balconies and generous living areas elevate a sense of endless sanctuary.



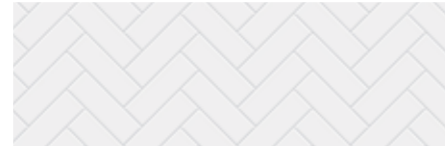
GENERAL



Bathroom Vanity Top:
Reconstituted Stone



Kitchen Splashback:
Mirror



Bathroom Feature Wall Tile:
Herringbone Pattern



Balcony Tile

LIGHT SCHEME



Living Area Timber Floor



Living Area Timber Floor



Kitchen Benchtop:
Reconstituted Stone



Kitchen Benchtop:
Reconstituted Stone

FINISHES



Kitchen Cupboards & Bathroom
Vanity Cabinet



Kitchen Cupboards & Bathroom
Vanity Cabinet



Bathroom Feature Wall



Bathroom Feature Wall



Bedroom Carpet



Bedroom Carpet



FOYER, HALLWAYS, LIVING & DINING

Floors	Engineered timber
--------	-------------------

BEDROOM

Floors	Carpet
Robe	Polyurethane /laminated shelves, drawers, hanging rail

KITCHEN

Floors	Engineered timber
Joinery	Polyurethane finish or similar
Overhead Cupboards	Polyurethane finish or similar
Cupboards	LED strip light
Benchtops	Reconstituted stone
Splashbacks	Mirrored glass
Appliances Studio	Miele gas cooktop, 2 burner
	Miele oven/microwave combination
	Miele built-in ducted range hood
	Miele dishwasher semi integrated
	Fridge and freezer combination

Appliances 1 Bedroom	Miele gas cooktop, 4 burner
	Miele electric oven 600mm wide, 76L
	Miele built-in ducted range hood
	Miele dishwasher semi integrated
	Fridge and freezer combination

Appliances 2 Bedroom	Miele gas cooktop, 4 burner
	Miele electric oven 600mm wide, 76L
	Miele microwave
	Miele built-in ducted range hood
	Miele dishwasher semi integrated
	Fridge and freezer combination

BALCONY

Floor	Tile
-------	------

LAUNDRY

Appliance	Wall-mounted Electrolux dryer or similar
Other	Cupboards and laundry tub

BATHROOM & ENSUITE

Floor	Tile
Walls	Tile
Feature Wall	Porcelain
Vanity Mirror and Cupboard	Mirror with polyurethane cupboard
Shower Screen	Semi frameless glass
WC	Parisi concealed cistern toilet or similar
Basin	Parisi basin or similar with reconstituted stone surround
Fixtures	Parisi mixer tap or similar
	Parisi shower on rail or similar
	Parisi shower mixer or similar
	Parisi flush plate or similar
	Parisi towel rail or similar
	Parisi toilet roll holder or similar
	Parisi shower shelf or similar

COMMUNICATION & LIGHTING

Telephone and data outlets to living and master bedroom. NBN ready. Cable and free-to-air TV outlets to living and main bedroom. LED lights throughout.

SECURITY

Swipe security card to building lobby, designated residential level, car park and lift access

Key access to apartment

Audio/video intercom system

AIR CONDITIONING

Studio	Ducted air conditioning single zone system – Condensers located on balconies
1 Bedroom	Ducted air conditioning day/night zone system to living and bedroom – Condensers located on balconies
2 Bedroom	Ducted air conditioning day/night zone system to living, master and second bedroom – Condensers located on balconies





THE LANDMARK
Luxurious Space
 ST LEONARDS SYDNEY

1 bedroom living area

Artist's Impression

OPEN STYLE
 Impeccable design and clean lines provide an airy openness, creating a seamless flow between living and dining, inside and out.

1 bedroom study area



Artist's Impression



2 bedroom residence

TRANQUIL HAVEN

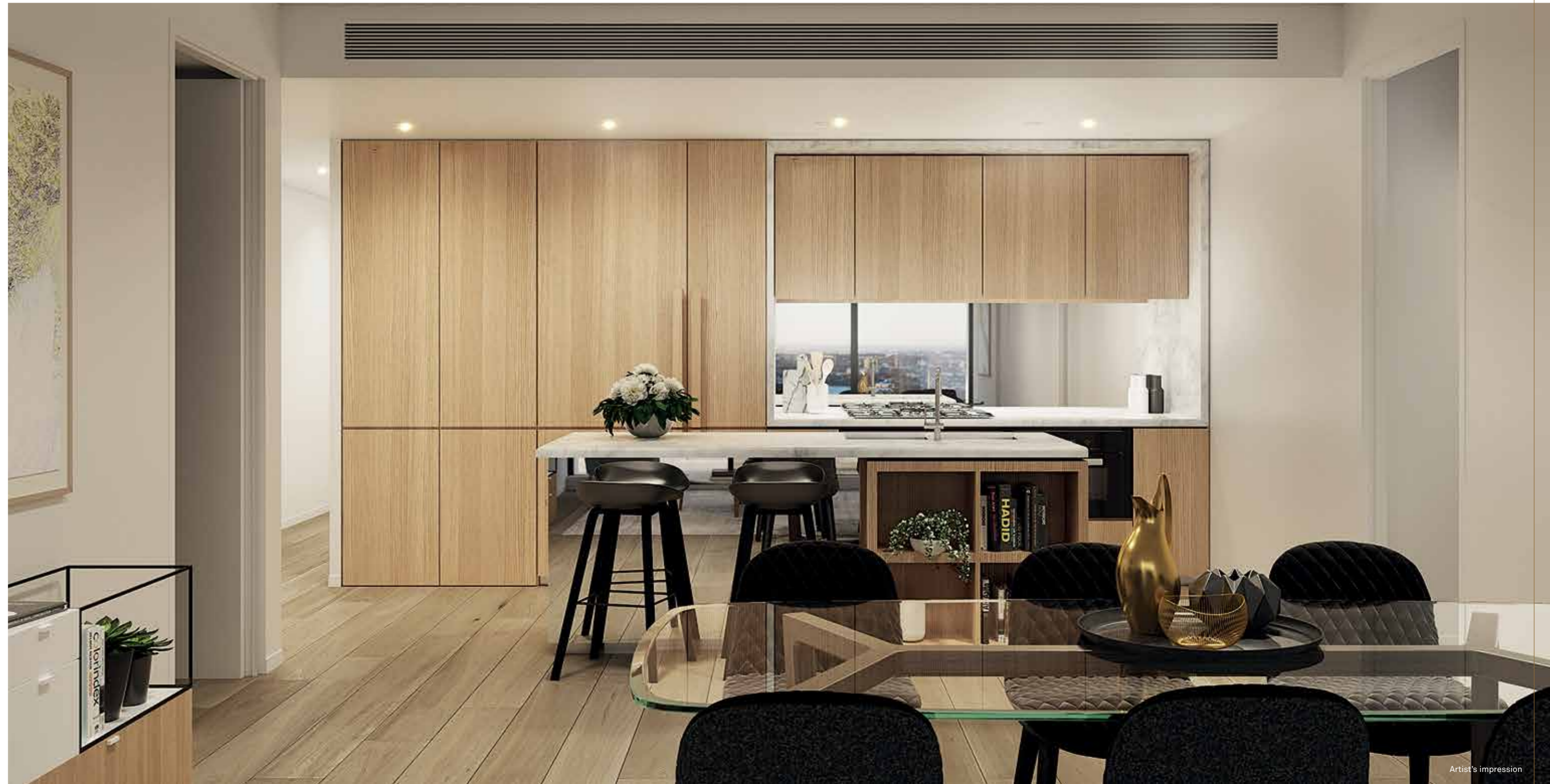
Your private retreat comes with generous robes, providing abundant storage for every little thing. Subtle lighting and lush carpeting create a tranquil haven from which to enjoy the sublime views.



2 bedroom — generous living areas

2 bedroom kitchen

THE LANDMARK



SPACIOUS DESIGN

Custom designed kitchens include feature stone benches and premium Miele appliances, while sophisticated living spaces cater to all facets of life, from family get togethers to entertaining.

FLOWING REFINEMENT

3 BEDROOM RESIDENCE

Experience an elevated way of life amidst unrivalled elegance. These spacious family homes are ideal for entertaining, exquisitely appointed, and artfully angled to capitalise on the sensational views.



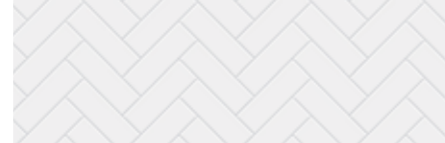
GENERAL



Bathroom Vanity Top & Vanity Surround:
Natural Stone



Kitchen Splashback:
Mirror



Bathroom Feature Wall Tile:
Herringbone Pattern



Balcony Tile

LIGHT SCHEME



Living Area Timber Floor



Living Area Timber Floor



Kitchen Benchtop:
Natural Stone



Kitchen Benchtop:
Natural Stone



Kitchen Cupboards & Bathroom
Vanity Cabinets



Kitchen Cupboards & Bathroom
Vanity Cabinets



Bathroom Feature Wall:
Natural Stone



Bathroom Feature Wall:
Natural Stone

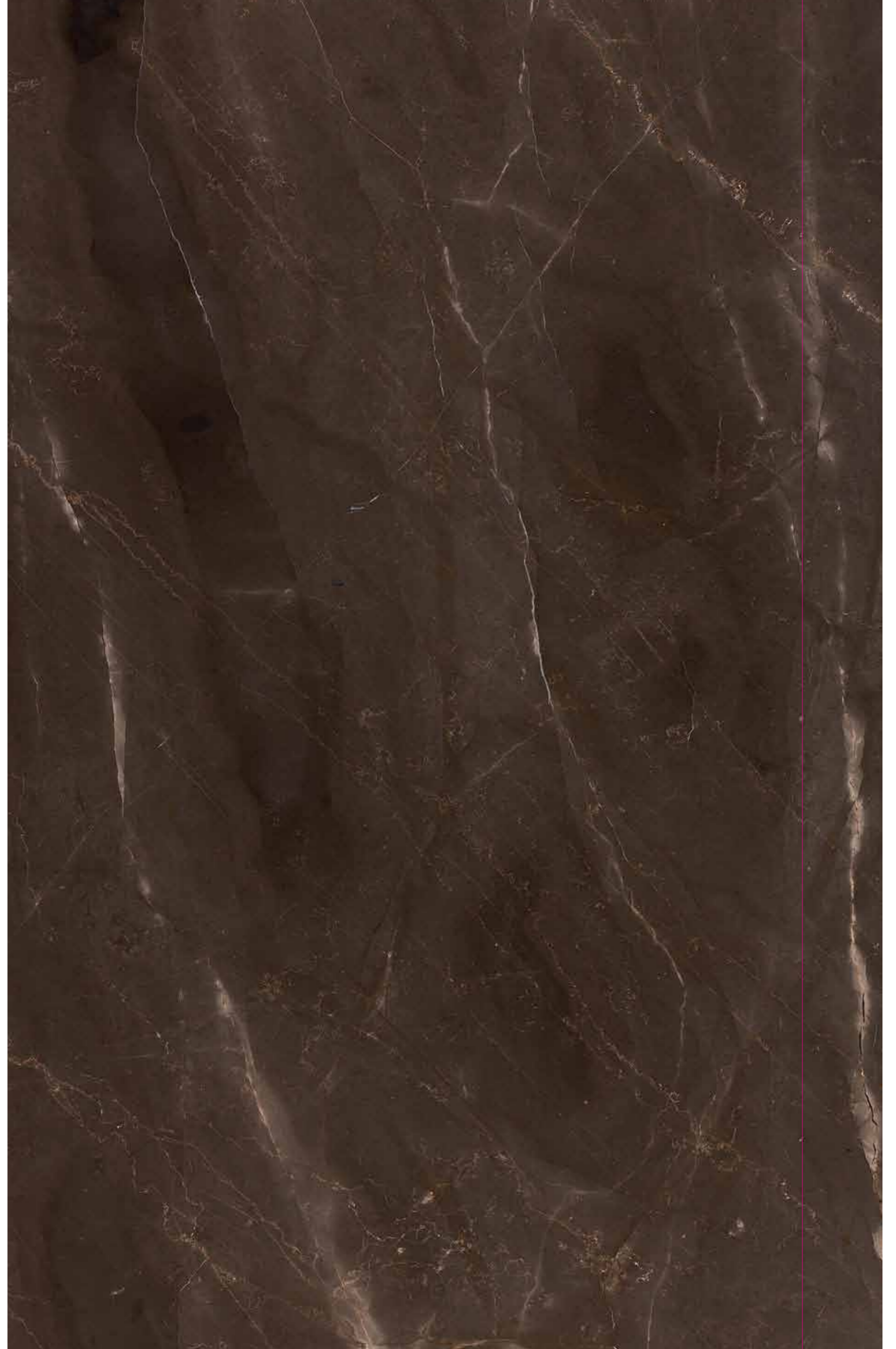


Bedroom Carpet



Bedroom Carpet

FINISHES



FOYER, HALLWAYS, LIVING & DINING

Floors	Engineered timber
--------	-------------------

BEDROOM

Floors	Carpet
Robe	Polyurethane/ laminate shelves, drawers, hanging rail

KITCHEN

Floors	Engineered timber
Joinery	Natural timber veneer
Overhead Cupboards	Natural timber veneer LED strip light
Benchtops	Natural stone
Splashbacks	Mirrored glass
Appliances	Miele 900mm gas cooktop, 5 burner Miele 900mm, 90L electric oven Miele built-in ducted range hood Miele integrated dishwasher Miele microwave Miele integrated fridge/freezer combination

BALCONY

Floor	Tile
-------	------

LAUNDRY

Appliance	Wall-mounted Electrolux dryer or similar
Other	Cupboards and laundry tub

BATHROOM & ENSUITE

Floor	Tile
Walls	Tile
Feature Wall	Natural stone
Vanity Mirror & Cupboard	Mirror and polyurethane cupboard
Shower Screen	Semi frameless glass
WC	Parisi concealed cistern toilet or similar
Basin	Parisi basin or similar with natural stone surround
Bath	Bathtub
Fixtures	Parisi mixer tap or similar Parisi shower on rail or similar Parisi shower mixer or similar Parisi flush plate or similar Parisi towel rail or similar Parisi toilet roll holder or similar Parisi shower shelf or similar

COMMUNICATION & LIGHTING

Telephone and data outlets to living and master bedroom. NBN ready. Cable and free-to-air TV outlets to living and main bedroom. LED lights throughout.

SECURITY

Swipe security card to building lobby, designated residential level, car park and lift access

Key access to apartment

Audio/video intercom system

AIR CONDITIONING

Ducted air conditioning day/night zone system to living, master, second and third bedroom





Artist's impression

EXCEPTIONAL CRAFTSMANSHIP
Expansive, open-plan kitchen and dining spaces are ingeniously designed to maximise natural light, beautifully complementing the expert craftsmanship and exquisite finishes.



Artist's impression

PRIVATE SANCTUM

Serene and sophisticated, bathrooms are exquisitely appointed with natural stone finishes, while floor-to-ceiling showers enhance the lavish sense of space.

OUTSIDE IN

Undulating balconies widen to capture and accentuate the majestic views, creating a space that flows effortlessly between indoors and out.

THE LANDMARK
Expansive views
ST LEONARDS SYDNEY



Artist's impression

GRAND HORIZONS

SKY HOME RESIDENCES

These outstanding residences boast majestic living spaces and opulent finishes, with every room offering awe-inspiring views of Sydney's magnificent harbour and across the North Shore to Middle Harbour.

GENERAL



Living Room Feature Wall - Wallpaper



Balcony Tile



Bathroom Floor Tile:
Natural Stone



Bathroom Wall Tile:
Natural Stone



Boffi Kitchen Splashback:
Stainless Steel



Bathroom Vanity Top & Surround:
Natural Stone

LIGHT SCHEME



Living Area & Bedroom Timber Floor



Boffi Kitchen Island Benchtop:
Quartzite Stone



Boffi Kitchen Island Cabinets



Boffi Kitchen Tall Unit Cabinets



Bedroom Feature Wall - Wallpaper:
Chevron Pattern

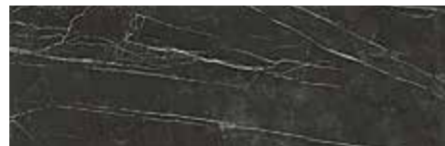


Bathroom Vanity

DARK SCHEME



Living Area & Bedroom Timber Floor



Boffi Kitchen Island Benchtop:
Marble Stone



Boffi Kitchen Island Cabinets



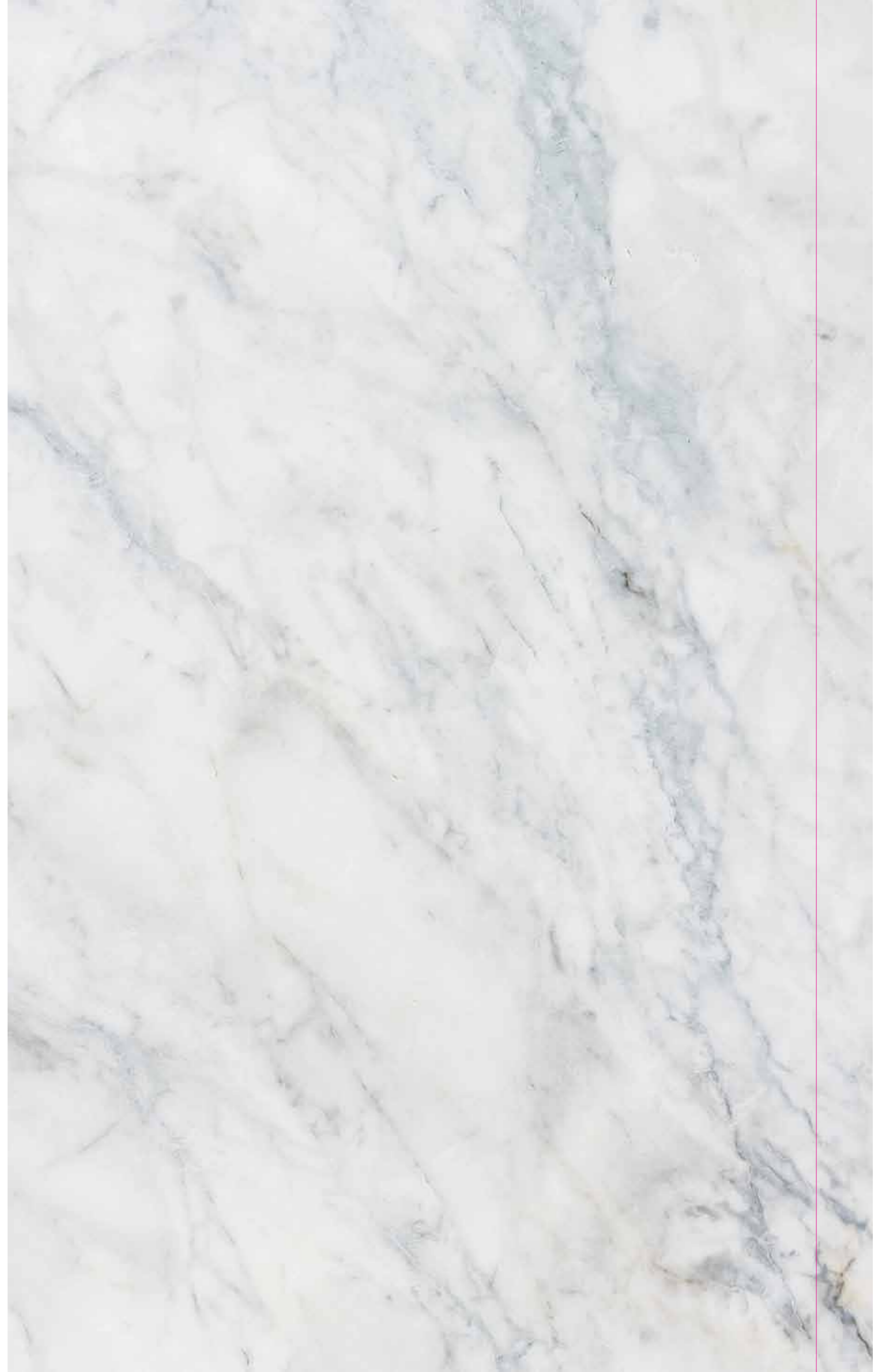
Boffi Kitchen Tall Unit Cabinets



Bedroom Feature Wall - Wallpaper:
Chevron Pattern



Bathroom Vanity



FOYER, HALLWAYS, LIVING & DINING

Floor	Engineered timber
Walls	Feature wallpaper and paint

BEDROOM

Floors	Engineered timber
Walls	Feature wallpaper and paint
Robe	Timber veneer with integrated LED highlight, mirror, shelves, drawers, hanging rail

KITCHEN

Floors	Engineered timber
Appliances	Gaggenau full surface induction cooktop Gaggenau oven 600mm wide, 76L Boffi built-in ducted range hood Gaggenau fully integrated dishwasher Gaggenau microwave/oven combination Sub Zero & Wolf integrated fridge/freezer combination Sub Zero wine fridge Gaggenau warming drawer Zip Hydro tap

BALCONY

Floor	Tile
Heating	Balcony radiant heating system.
Other	Natural gas BBQ point, water point, LED strip light and power outlets

LAUNDRY

Washer & Dryer	Miele washer Miele dryer
Other	Cupboards and laundry tub

BATHROOM & ENSUITE

Floor	Natural stone tile with underfloor heating
Walls	Floor-to-ceiling natural stone tiles
Vanity	Natural stone vanity bench top
Vanity Mirror & Cupboard	Mirror cupboard
Shower Screen	Frameless glass
WC	Duravit concealed cistern toilet or similar
Bath	Bathtub
Fixtures	Astrawalker mixer tap or similar Astrawalker shower on rail or similar Astrawalker rainshower Astrawalker shower mixer or similar Astrawalker flush plate or similar Astrawalker heated towel rail Astrawalker toilet roll holder Astrawalker shower shelf

COMMUNICATION & LIGHTING

Telephone and data outlets to living, master bedroom and all bedrooms. NBN ready. Cable and free to air TV outlets to living and main bedroom. LED lights throughout.

SECURITY

Swipe security card to building lobby, designated residential level, car park and lift access

Key access to apartment

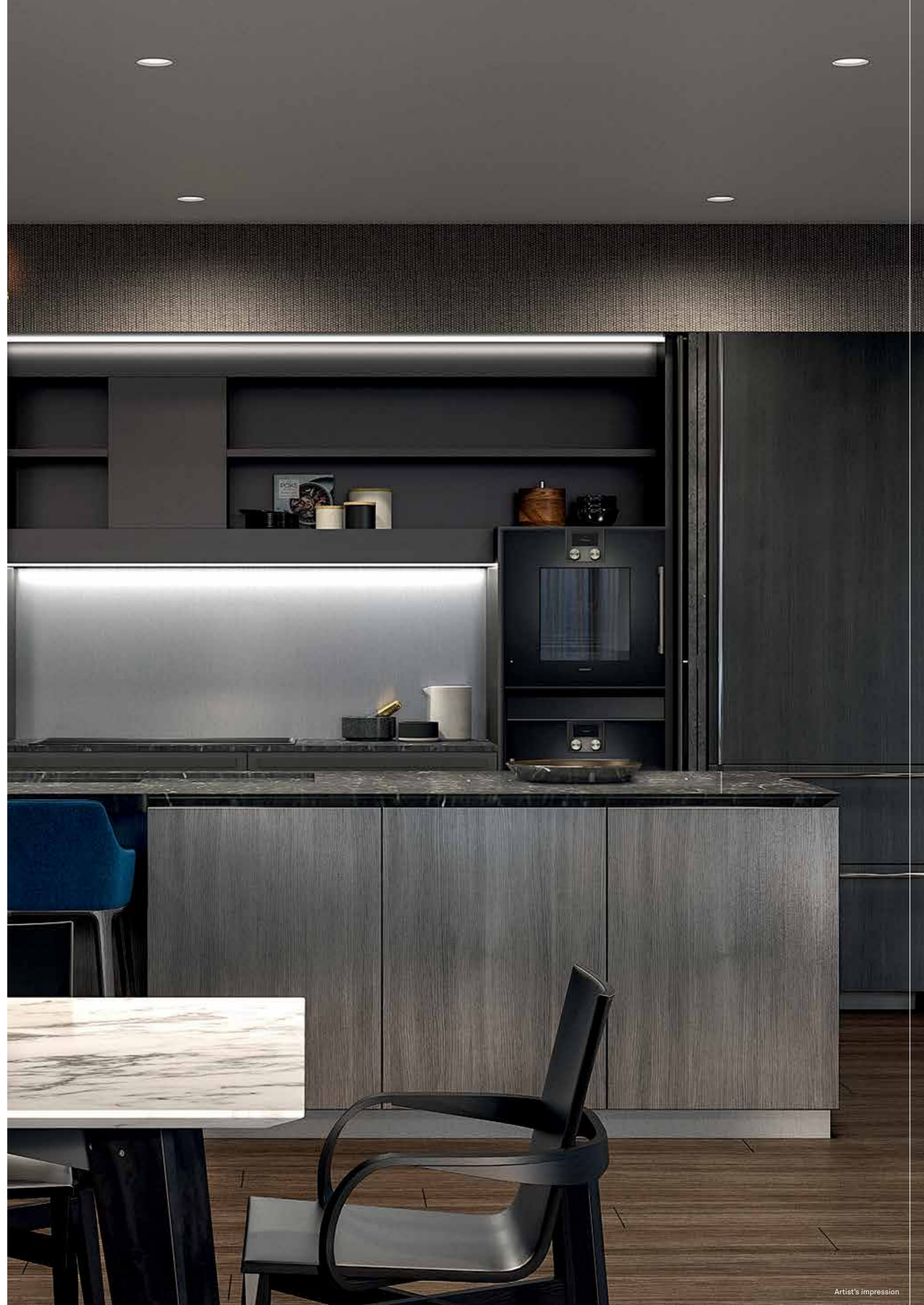
Audio/video intercom system

AIR CONDITIONING

Ducted air conditioning day/night zone system to living, master, and all bedrooms

INNOVATION

Integrated Cbus system





EXPANSIVE ELEGANCE

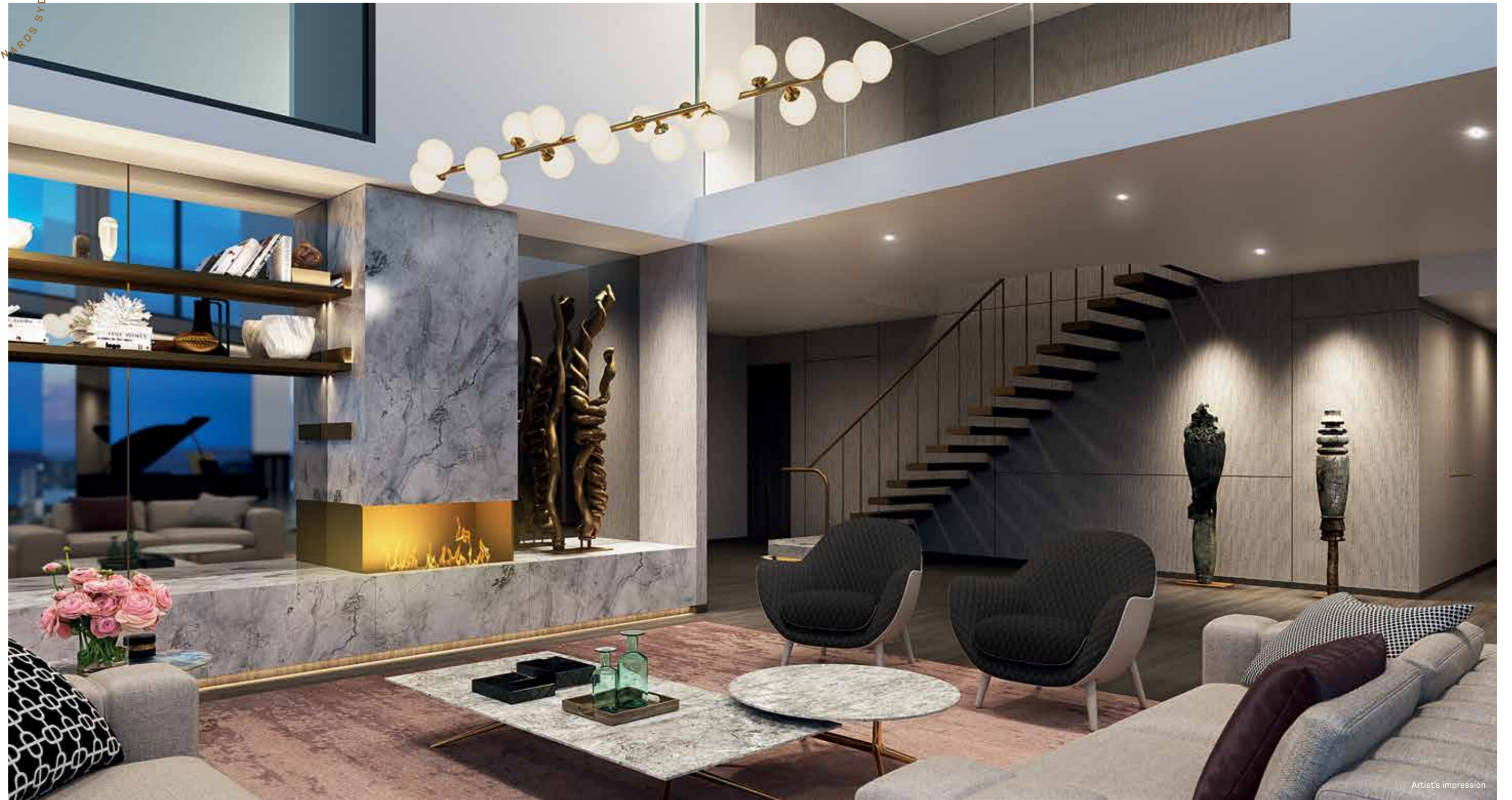
Live in the height of luxury, with an unrivalled sense of space and style set against the spectacular backdrop of panoramic harbour views.



LUXURIOUS WARMTH

On colder days, you can relax in the warm glow of an open fireplace, beautifully reflected in the brass handrail of a gracefully cantilevered staircase.

THE LANDMARK
 SYDNEY
 ST LEONARDS





CULINARY PERFECTION

Refined and elegant, your complete Italian-made Boffi kitchen features natural stone benches and Gaggenau appliances. A gourmet chef's dream, it's custom designed for entertaining.

Boffi

THE LANDMARK
Immaculate detail
ST LEONARDS SYDNEY



Artist's impression



Artist's impression

REFINED RETREAT

Your lavish private suite features a spacious walk-in robe, with an abundance of elegant storage space for all your sartorial accoutrements.



SYDNEY



Artist's impression

— “ —

AN ABUNDANCE OF NATURAL LIGHT IS A BEAUTIFUL REALITY

Design for The Landmark interiors draws heavily on two major influences – local nature and history.

The Landmark interior design is centred on an ethos of natural light and transparency, underscored by a continuous interplay between light and dark throughout every space. The second major influence is the Georgian era, the time of Sydney's birth as a city.

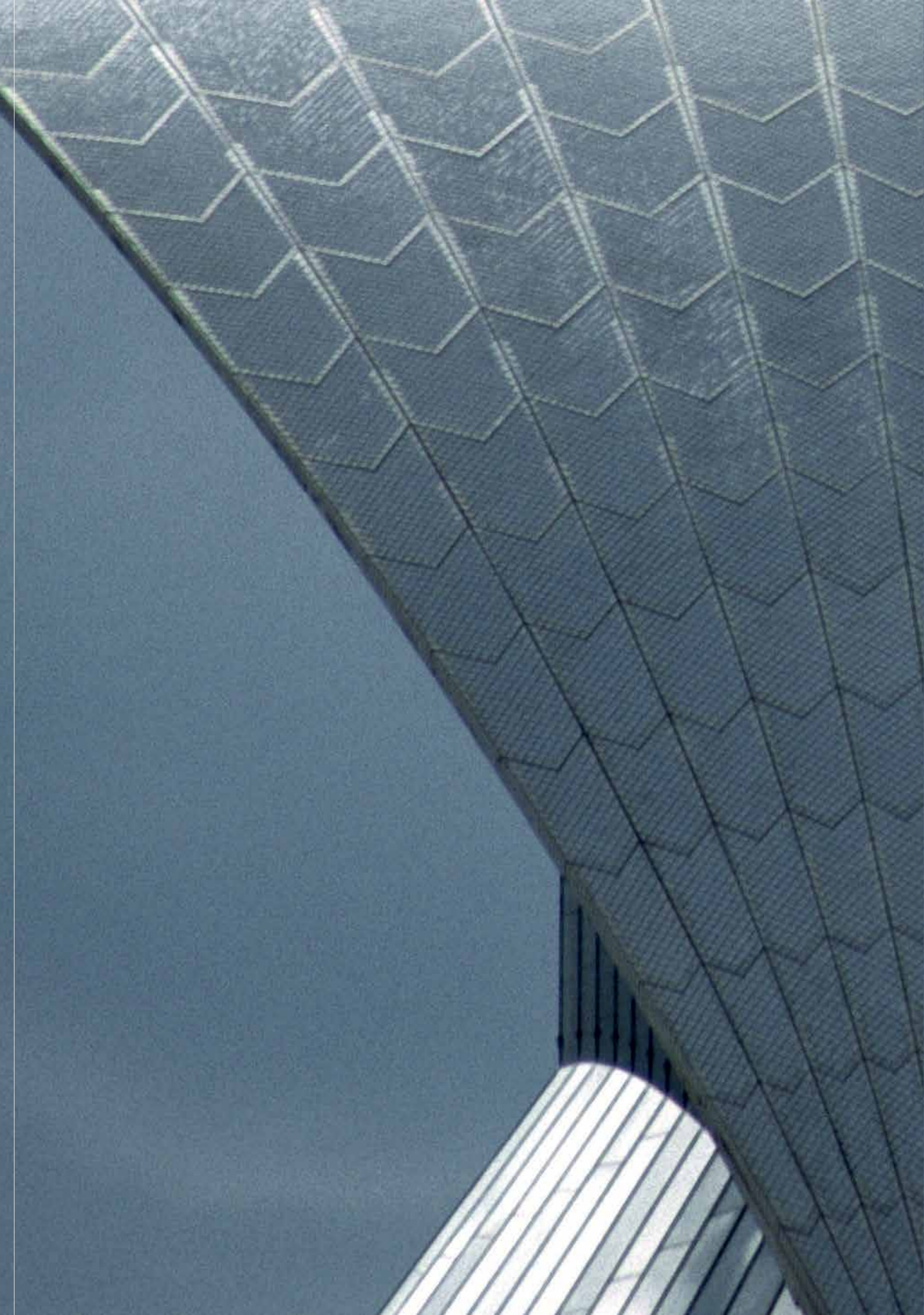
While resolutely contemporary, the interior design pays subtle tribute to Thomas Townshend, the 1st Viscount Sydney of St Leonards, who gave his name to both our city and suburb. Unlike other bygone eras, the interior design of the Georgian era focused on harmony and balance. The light and airy rooms of the period have provided inspiration for the design of The Landmark.

The Georgian influence also shines through in the brass detailing that's employed to offset

the earthiness of natural wood and stone. Dark timber floors contrasted with gleaming brass highlights continue the theme of light and dark. Meanwhile surface textures alternate between semi matte and gloss, relating back to reflections in water.

The corridors of The Landmark feature natural light and views, with sleek, minimal windows that invite people to look out. Once inside the residence, layouts are designed to reflect the way we live, emphasising the relationship between the kitchen and living areas, ensuring views are maximised. Even the kitchen splashbacks are designed to enhance and reflect the sublime views.

While owners will be able to choose between light and dark colour palettes, homes will inevitably feel light. With the luxury of floor-to-ceiling windows throughout, an abundance of natural light is a beautiful reality.



CRAFTED FOR LIVING

Created for a luxurious life, The Landmark offers exceptional experiences for all ages. With exclusive access to Club 500, residents will enjoy an array of resort-style services and amenities.

MASTER STROKE

Take a lap of the lush indoor pool, soak in the spa, or luxuriate in the glass-fronted sauna.





TAKE A SWING

Book a tee time and play a round of virtual golf in the state-of-the-art golf room.

PLAY ALL DAY
Keep the kids entertained on a rainy day with the nature-themed discovery playground.





THE LANDMARK
Refined elegance
ST LEONARDS SYDNEY



Artist's impression



Artist's impression

ENTERTAINMENT CENTRE
Enjoy your favourite film in the private cinemas,
or make beautiful music in the rehearsal space.

UNWIND IN STYLE

Relax with a book or get serious about your studies in the exquisite luxury of the library.





Artist's impression

AMENITY

ELEGANT ENTERTAINING

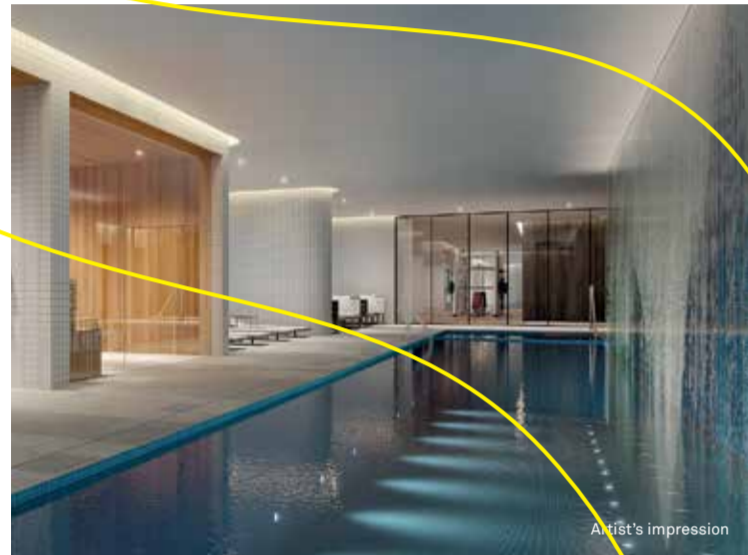
The lavishly appointed dining and lounge areas provide the perfect space to entertain your guests.



Artist's impression

CLUB 500

THE PRIVILEGE IS ALL YOURS WITH THESE EXCLUSIVE RESIDENT RETREATS, RECREATION AND SOCIAL SPACES.



Artist's impression

FITNESS CLUB

The generous indoor lap pool features a stunning mosaic custom designed for The Landmark, while lavish resort-style facilities include a relaxing spa and sauna, private gym and separate yoga room.



Artist's impression

VIRTUAL GOLF ROOM

Bring the outdoors in with a game of fully immersive virtual golf. Combining old world style with modern technology, the Golf Room invites players to select from any course from around the world, and track their swings as they play.



Artist's impression

KIDS' AREA

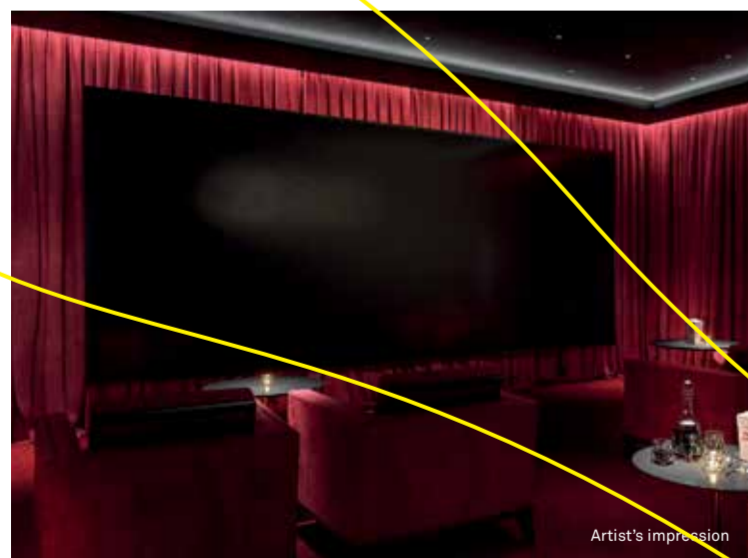
This inventive indoor playground is exclusively available to residents so you know your kids are in a safe space. With a generous double-height ceiling, the expansive space caters to children of all ages and can be reconfigured to suit a range of kids' social events.



Artist's impression

LIBRARY

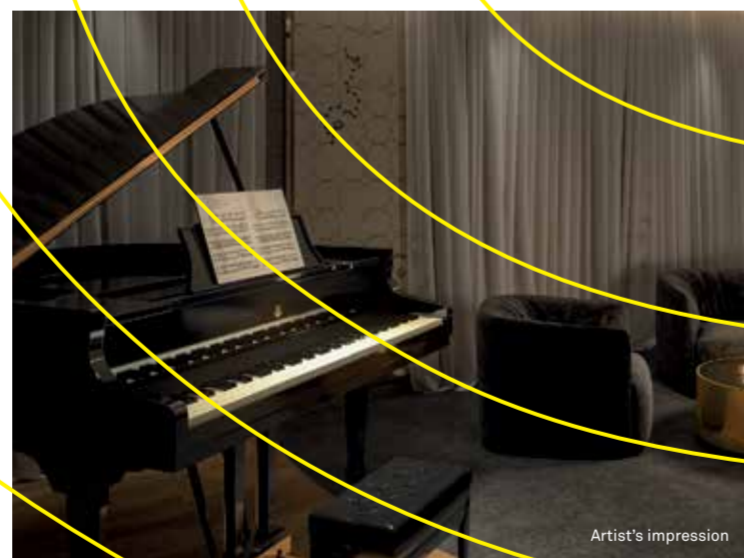
Serene and inviting, the library provides an alternative study space for students of all ages, as well as giving residents a tranquil place to read a book or engage in quiet contemplation.



Artist's impression

CINEMA ROOM

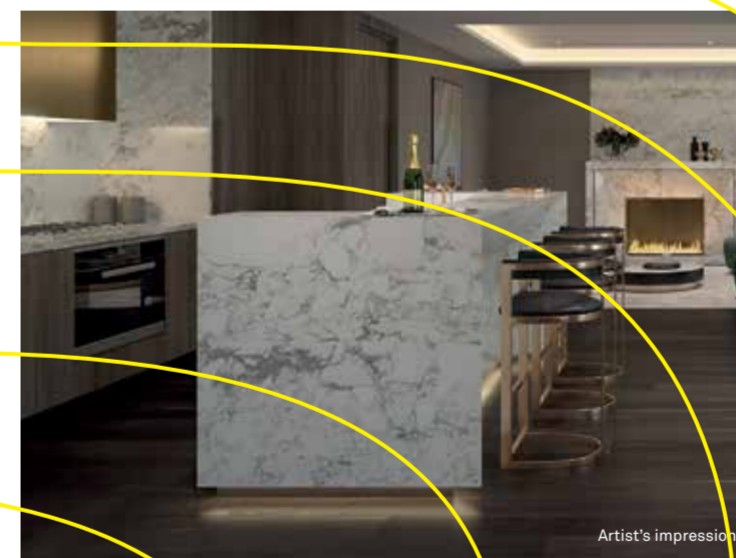
State-of-the-art screening rooms can be booked by Club members to enjoy a movie of their choice. The more formal cinema boasts comfortable high-backed chairs and a discreet bar, while a casual kid-friendly option features bean bag seating.



Artist's impression

MUSIC REHEARSAL ROOM

A rehearsal or practice area designed for all ages, the music room can be one large or two separate, smaller rooms. Featuring a grand piano, this acoustically engineered space can also transform into an intimate concert venue.



Artist's impression

DINING ROOM

Planning a grand dinner party? Reserve the elegantly furnished dining room and adjoining kitchen, and entertain in style. For the ultimate private dining experience, catering can be arranged through the Club 500 concierge service.



Artist's impression

ENTERTAINING LOUNGE

Refined and elegant, with a comfortable club-like ambience and imposing fireplace, the lavishly appointed lounge is available to be booked for private events, giving you the ability to entertain more guests in a larger space.

SKY AMENITY



THE LANDMARK
Style set in stone
ST LEONARDS SYDNEY

Sky Home residents and their guests will be welcomed via a private lobby with two lifts featuring destination controls. Elegant and sophisticated, with sleek marble, glass, and brass accents, it features a soaring double-height skylight atrium.



Artist's impression

SKY LOUNGE

For the exclusive use of residents of DA Level 30 and above, the Sky Lounge offers stunning, panoramic views of Sydney's magnificent harbour. Luxuriously appointed, it's the perfect place to relax on a Sunday afternoon or celebrate New Year's Eve with a prime view of the fireworks.



CLUB 500 CONCIERGE

Live the lifestyle you deserve with Sydney's finest luxury concierge service at your fingertips. From restaurant bookings to arranging movie tickets or running errands, this service is exclusive to residents.



LIFESTYLE

Your everyday needs are covered, from home cleaning to car washing, meal delivery to catering. And if you require the more specialised services of an interior designer, event manager or chauffeur, we know just who to call.



BESPOKE SERVICES

From the small to the significant, we'll tailor the perfect experience for you – whether it's booking tickets to the latest movie or planning a private cruise on the harbour, organising a luxury holiday or a designer weekend away.



GIFTING

Unique, distinctive, or hand-crafted, we can source exquisite gifts for every occasion, including elegant floral arrangements and stylish homewares.



WELLBEING

Live your best life with a selection of wellbeing services, from an early morning yoga class to an inspirational life coach who will connect you to your strengths, purpose and goals.

GROUND FLOOR



- 1. Commercial Lobby
- 2. Spa
- 3. Main Commercial Lobby
- 4. Sauna
- 5. Main Sky Home Lobby
- 6. Pool
- 7. Main Residential Lobby
- 8. Gym



FIRST FLOOR

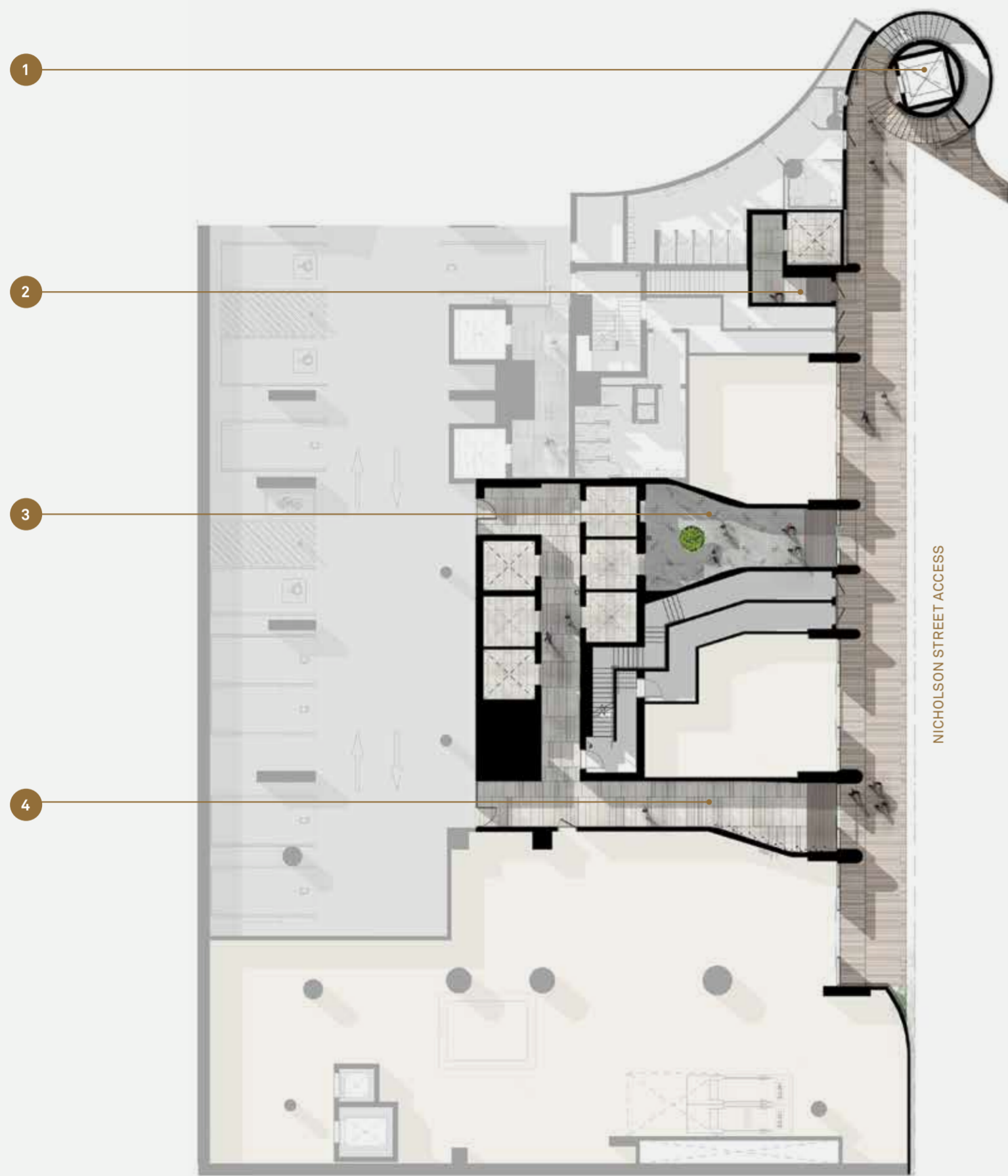


- 1. Cinema
- 2. Cinema
- 3. Residents' Lounge
- 4. Residents' Kitchen & Dining
- 5. Residents' Library
- 6. Music Room
- 7. Kids' Area



NICHOLSON STREET

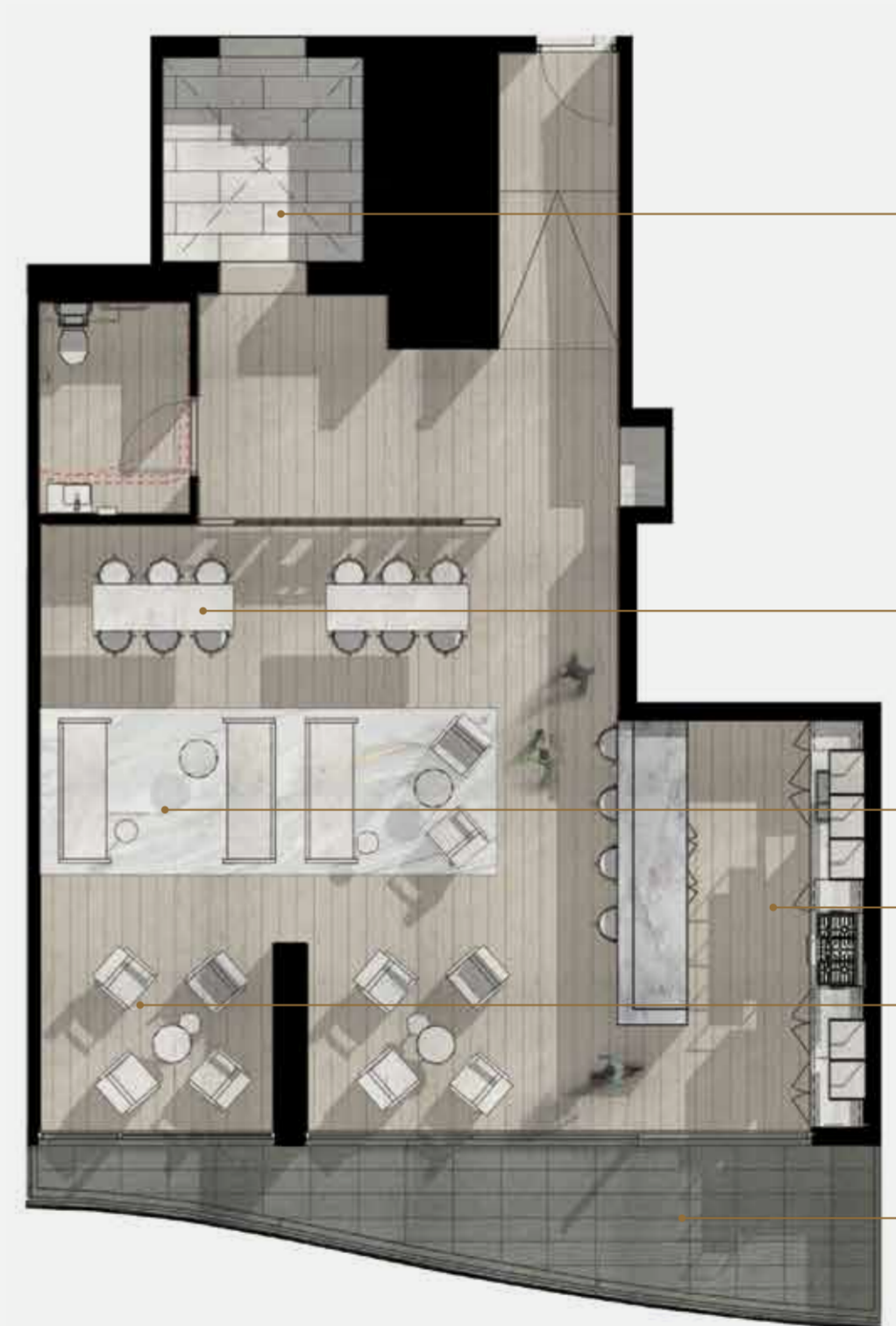
THE LANDMARK



NICHOLSON STREET ACCESS

- 1. Access to Friedlander Place
- 2. Nicholson Street Commercial Lift Lobby
- 3. Nicholson Street Penthouse Lift Lobby
- 4. Nicholson Street Residential Lift Lobby

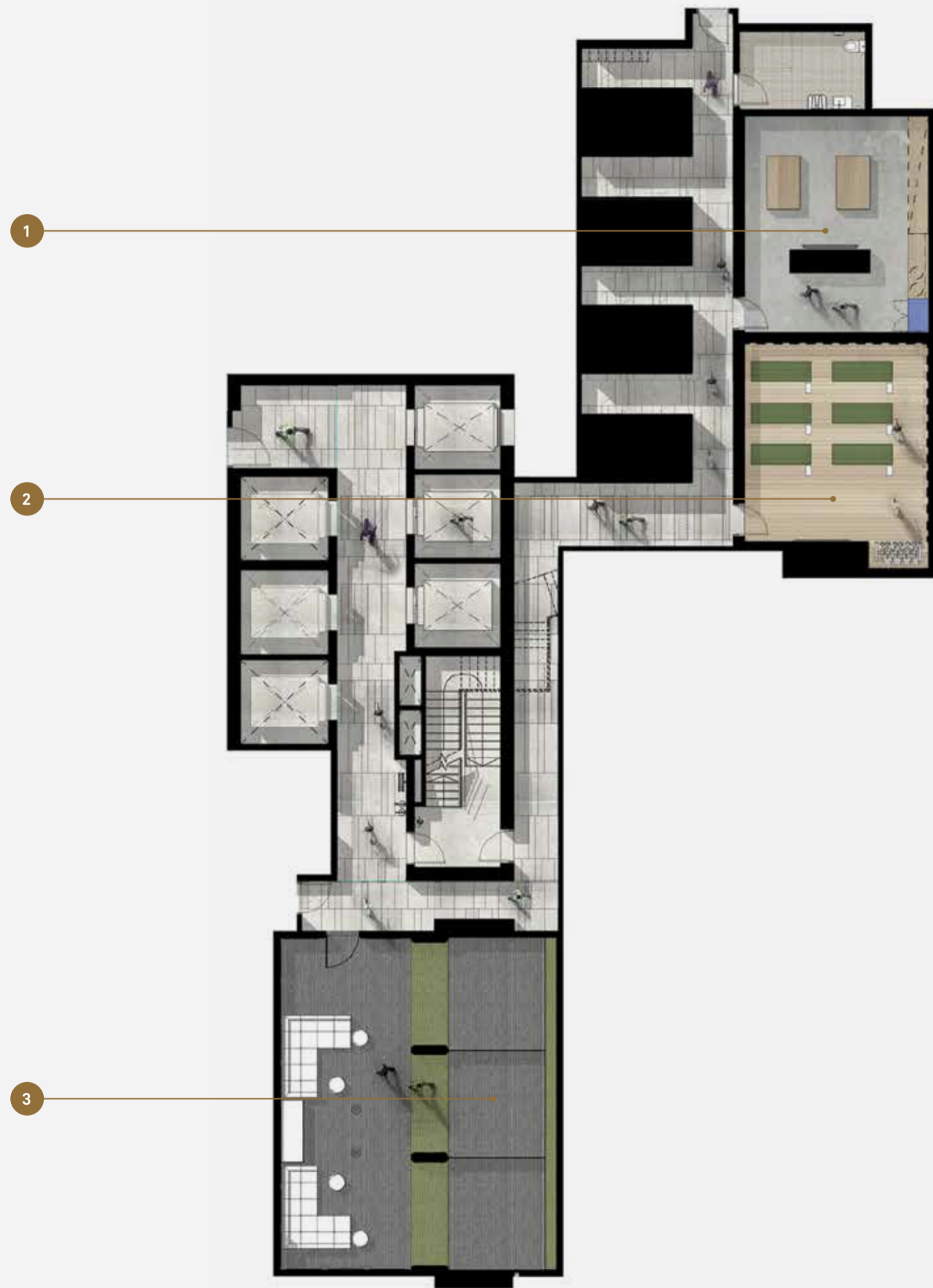
SKY LOUNGE



AMENITY

- 1. Lift Access
- 2. Bar
- 3. Reading Zone
- 4. Residents' Kitchen
- 5. Viewing Lounge
- 6. Viewing Deck

LOWER GROUND



- 1. Utility Workshop
- 2. Yoga Room
- 3. Virtual Golf Room

FUTURE READY

Designed for the lifestyle of tomorrow, The Landmark offers state-of-the-art technology and a range of contemporary conveniences. Available to all residents, these features will make life easier, smarter and more efficient.

CAR SHARE

For residents who wish to enjoy all the benefits of owning a car without the expense and responsibility, car share spaces will be established on-site.

VEHICLE CHARGING BAYS

For those drivers who are connected to the future of mobility and believe in going the extra mile for the environment, electric vehicle charging bays are available.

NBN READY

Every residence is wired for the future with NBN-ready infrastructure embedded to ensure high-speed internet connectivity.

SUSTAINABILITY

Overall efficiency and careful planning have shaped this iconic building. Rooftop solar panels help offset energy consumption, while rainwater is harvested and recycled through the internal water management system for irrigation throughout the building and in open public spaces.

SMART HOME AUTOMATION

Residents will have the option to include the features of Nero™ — a voice or app activated smart home system designed for simpler, smarter living.

- **Security:** Receive instant notifications, access security cameras from anywhere or utilise a smart doorbell to see who's knocking, even if you're not at home.
- **Lighting:** Transform your existing lighting into a smart, wirelessly controlled environment, allowing you to easily control the lighting throughout your home at specified times or by a simple touch.
- **Energy Management:** The My Nero Mobile App allows you to track and control your home's energy consumption. You can monitor live data remotely and use this information to lower your power bills.



ETCHED IN THE LANDSCAPE

As an established Lower North Shore suburb with abundant amenity and effortless city connections, St Leonards offers a prestigious village atmosphere and address.

NEIGHBOURHOOD TREASURES



THE LANDMARK
Abundant choice
ST LEONARDS SYDNEY

Step out and experience the best of dining, culture, education and recreation on the Lower North Shore.

LEISURE & RECREATION



3 ST LEONARDS PARK

One of the Lower North Shore's largest and best-loved parks, St Leonards Park features multiple playing fields, including North Sydney Oval, along with netball courts, cricket nets, bowling greens and a clubhouse. It is also home to a custom-designed, fully fenced children's playground, picnic tables, BBQ facilities, and a network of tree-lined pedestrian paths.

4 THE COAL LOADER & BALLS HEAD RESERVE

A stunning example of urban renewal at its best, the Coal Loader Centre for Sustainability is a place to relax, be inspired, grab a quick coffee, or indulge in a leisurely picnic. With its sensational views and fascinating history as an ex-industrial coal bunkering site, there is no shortage of things to enjoy and explore. The adjoining Balls Head Reserve boasts an abundance of serene walking trails and panoramic harbour views.

1 NORTH SYDNEY OLYMPIC POOL

Spectacularly situated on the shores of Sydney Harbour, the North Sydney Olympic Pool looks up to the magnificent arches of the Sydney Harbour Bridge, across to the Opera House and city skyline. A full Olympic-sized pool, it has seen a total of 86 world records set over the years by swimming greats such as John and Ilsa Konrads and Shane Gould. With its gym, crèche and swimming clubs, the pool caters to all the family.



2 LUNA PARK

Famously "just for fun" Luna Park has been delighting children and adults alike since 1935. Dramatically positioned on the shores of Sydney Harbour and framed by its legendary laughing face entrance, Luna Park is a veritable Sydney institution. With its beautifully preserved Art Deco structures, classic sideshow games and thrilling selection of rides, it makes a perfect day out for the whole family.

5 WENDY'S SECRET GARDEN

A labour of love by local legend Wendy Whiteley, this hidden oasis is one of Sydney's best kept secrets. Salvaged from the overgrown rubbish of previously unused railway land, Wendy's incredible personal project emerged as an extraordinary gift to the people of Sydney. A place of beauty, serenity, colour and whimsy, the garden is nestled in the tranquil beauty of Lavender Bay Parklands and enjoys iconic harbour views.



8 THE WOODEN WHISK

A popular local favourite, The Wooden Whisk specialises in deliciously nutritious food and seriously good coffee. Open six days a week from early morning to late afternoon, the well-loved Whisk does a brisk line in hearty breakfasts and tasty lunches – regulars rave about their lamb salad. They also provide a catering service for those times when you need to feed a crowd at home or work.

9 LA CANTINA

Super stylish and modern, La Cantina's clean lines, blonde-wood furniture, and mouthwatering menu make it a must-do for locals and visitors alike. Serving up Will and Co's coffee alongside great-tasting breakfasts, lunches and sweet treats, it's also fully licensed. So if you fancy a glass of bubbly with your Eggs Benedict, or a crisp chardonnay with your chilli prawn linguine, you'll be right at home.



10 MAS.QUE DINING BAR

Refusing to be defined by any one particular cuisine, Mas.Que's chefs use their experiences from around the world to bring together contrasting flavours and cultures in their inspired creations. With seasonal menus featuring the best and freshest ingredients, the food is guaranteed to be delicious, fabulous, and entirely Instagram-worthy. With an equally inspired range of drinks – both alcoholic and otherwise – Mas.Que lives up to its social media status.



“ THE FOOD IS GUARANTEED TO BE DELICIOUS, FABULOUS, AND ENTIRELY INSTAGRAM-WORTHY. ”

11 THE RICE DEN

The talented team at The Rice Den employ a farm-to-table philosophy in creating their deliciously modern Cantonese dishes. Perfectly matched by unique Canton-inspired cocktails or wines selected by the in-house sommelier, a meal here is as memorable as it is mouthwatering. With a contemporary take on old world Cantonese style, The Rice Den makes an ideal venue for any event, from an intimate dinner to a large celebration.

12 LE BOUCHON

Le Bouchon is a traditional French café/bistro serving breakfast, lunch and dinner to hungry Francophiles. With a menu featuring authentic Lyonnaise bistro fare such as escargots, steak tartare, and confit duck, it doesn't disappoint. To be truly transported, finish your meal with a classic French dessert such as Crêpe Suzette or Îles Flottantes. For large groups or special occasions, there's also an exclusive, private function area.

15 CONTACT SHEET

Established in 2014, Contact Sheet is a hub for advancing the art of photography. With over 40 exhibitions under their belt, as well as a series of free public programs, Contact Sheet has so far attracted an audience of over 5,000 visitors. Proud to support both emerging and established photographic artists, the gallery draws from a pool of world-class curators to create their inspiring exhibitions.

16 ME ARTSPACE

The realisation of a dream of established Sydney artist Debbie Mackinnon, me Artspace is a thriving creative environment comprising a studio, gallery and art collective where like-minded artists come to explore their ideas, follow their passion, and develop their painting potential. With four artists-in-residence, me Artspace gallery holds a series of exhibitions throughout the year.

“ THE TWT CREATIVE PRECINCT PROVIDES A DYNAMIC SPACE FOR ARTISTS, PERFORMERS AND CREATIVE BUSINESSES TO FLOURISH. ”



32 ST MARY'S CATHOLIC PRIMARY SCHOOL

Established in 1888, this faith-based primary school caters to children from Kindergarten to Year 6. With a student population of approximately 400, St Mary's is, “small enough to care, but big enough to dare”. Welcoming students from a diverse range of backgrounds, the school's mission is summed up by the acronym AIM – aspire, inspire, and make a difference. St Mary's believes, “it is easy to be ordinary, we want to be extraordinary.”

33 NORTH SYDNEY GIRLS HIGH

34 NORTH SYDNEY BOYS HIGH

These two highly regarded, academically selective high schools are institutions of the Lower North Shore. The girls' school, founded in 1914, has a proud tradition of preparing talented young women for achievement in a broad range of endeavours. The boys' school, founded a year later in 1915, is dedicated to excellence and innovation in boys' education, with a bold vision to be the premier boys' school in NSW.

35 SHORE GRAMMAR SCHOOL

One of Australia's leading comprehensive schools, Shore Grammar was established in 1889 and maintains a strong tradition, grounded in Christian faith and rigorous academic work. As one of Sydney's most elite private boys' schools, places at Shore are so highly sought after that parents are encouraged to register their sons at birth. Shore boys tend to go on to great things – amongst their alumni are captains of industry and science, a Prime Minister and an Archbishop.

EFFORTLESS JOURNEY

The Landmark puts you within easy reach of the best of the North Shore and beyond. Excellent walkability and effortless transport connections provide you with an abundance of options for every journey.

LEISURE & RECREATION

1. North Sydney Olympic Pool
2. Luna Park
3. St Leonards Park
4. The Coal Loader & Balls Head Reserve
5. Wendy's Secret Garden
6. Lavender Bay Jetty
7. Waverton Park

FOOD & DINING

8. The Wooden Whisk
9. La Cantina
10. Mas.Que Dining Bar
11. The Rice Den
12. Le Bouchon
13. Garfish Restaurant
14. The Stoned Crow

ART & CULTURE

15. Contact Sheet
16. me Artspace
17. Hayden Orpheum Picture Palace
18. TWT Creative Precinct

SHOPPING

19. Greenwood Plaza
20. Chatswood Chase
21. Chatswood Westfield
22. Constant Reader
23. Top 3 By Design

TRANSPORT

24. St Leonards Station
25. Crows Nest Station
26. North Sydney Station
27. McMahon's Point Ferry
28. St Leonards Bus Interchange

HEALTH

29. Royal North Shore Hospital
30. North Shore Private Hospital
31. Mater Hospital

EDUCATION

32. St Mary's Catholic Primary
33. North Sydney Boys High
34. North Sydney Girls High
35. Shore Grammar School
36. Loreto Kirribilli
37. Monte Sant'Angelo Mercy College
38. Wenona School
39. St Aloysius' College
40. TAFE St Leonards

POSITIONED FOR TOMORROW

Identified as the strategic health and education precinct in Sydney's economic growth corridor, St Leonards is the sixth largest employment centre with more on the horizon.

2024 METRO

Opening in 2024, the Crows Nest Metro will link St Leonards by rail to the Norwest Business Park, Macquarie University, North Ryde, Barangaroo and Martin Place.

FRIEDLANDER PLACE

A bold vision for the future of St Leonards, Friedlander Place will create a thriving and connected community space with The Landmark as its centrepiece.

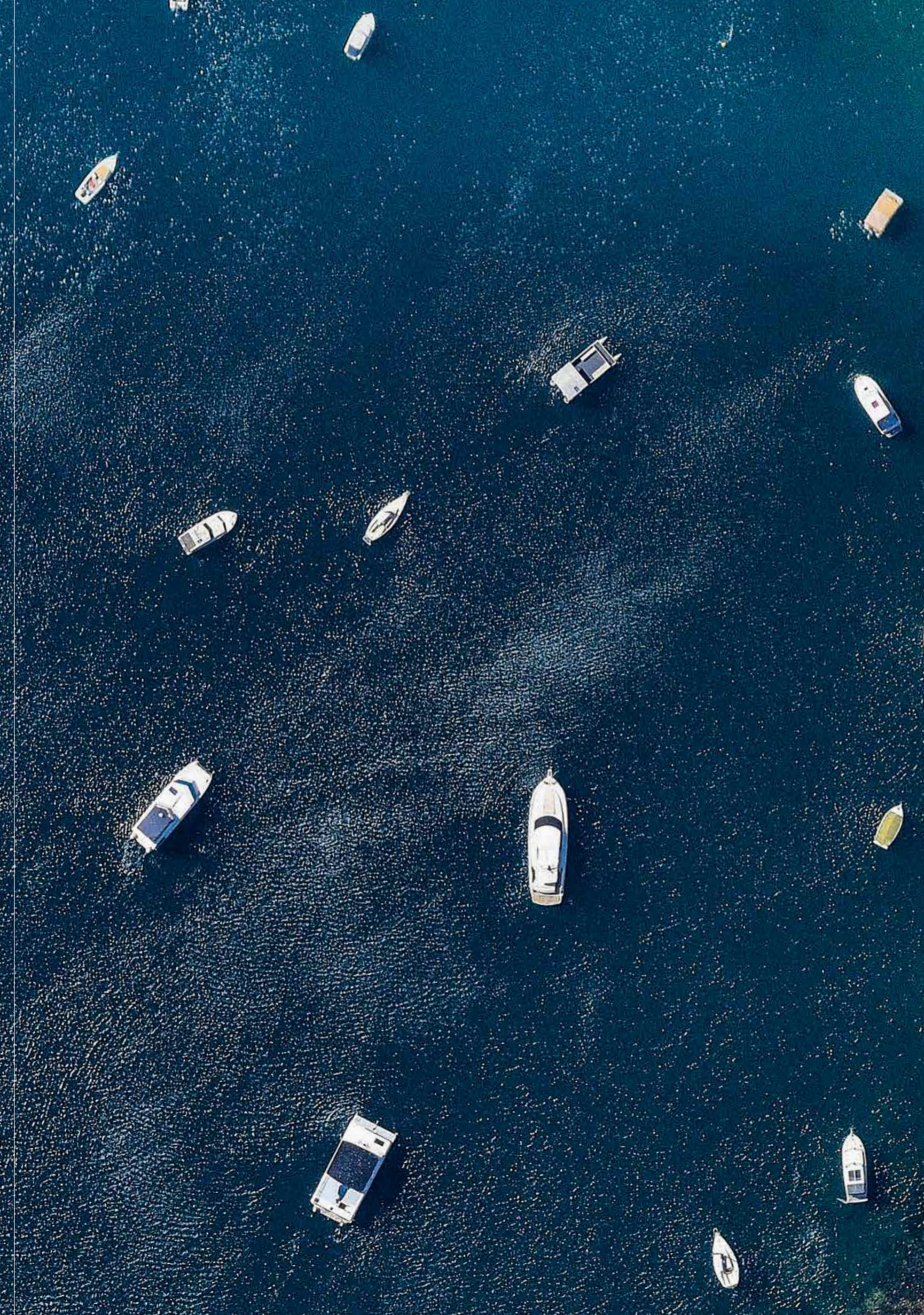
8.7HA NEW SPACE

Council plans include two new linear parks in Mitchell and Oxley Streets as well as upgrades to existing parks and the delivery of 8.7ha of new open space.

HEALTH PRECINCT

Home to a prestigious selection of medical specialists, health education institutions and hospitals, including North Shore Private Hospital and Royal North Shore Hospital, St Leonards is one of Australia's leading medical destinations.





MADE BY MASTERS

The Landmark is the culmination of visionary thinking and design, a masterful collaboration between industry leaders in architecture, interior design, construction and residential developments.

THE COLLABORATORS



Jon Shally, Associate Director, ADP; Mike Watson, Director of Interiors, a+ design group; Conrad Oma, Senior Hydraulic Engineer, ADP; **Tony Leung, CEO & Founder, a+ design group**; Karen Chow, Director, a+ design group; Paul Webber, Director, Webber Design; Chrissy Partl, Interior Designer, Warren and Mahoney; Thomas Hansen, Associate, Warren and Mahoney; Andrew Chan, Senior Associate, Webber Design.

THE TEAM



A+ DESIGN GROUP

At a+ design group, our mission is to create moments that last forever. We constantly strive to create meaningful spaces that enhance people's connection with nature and one another.

This is evident in our signature projects such as The Landmark and Sofitel Darling Harbour, where we have carefully infused our designs with natural light, beautiful geometry and proportion.

With innovative and collaborative thinking, we endeavour to define new possibilities in our designs. As an established practice, our clients have confidence in our valuable years of experience and our record of delivering high quality, complex projects.

Our approach is holistic from feasibility, design through to construction and sales and marketing. It is here at a+, where we develop a partnership mindset to understand our clients' needs and play a role in realising their vision.

aplusdg.com.au



WARREN & MAHONEY

Warren and Mahoney is an international practice of designers and architects who create experiences that connect people and enhance belonging.

Our team of 300 work as one integrated studio across seven locations, weaving individual endeavour into a stronger whole.

We see ourselves at the service of our clients, and of the community, and we take this approach to deliver long-term, sustainable outcomes.

We are of and from Australasia and the Pacific. We're the product and the influence of the vibrant cities, rich culture and powerful landscapes that have made us who we are.

We reject pre-conceived styles. Our work instead responds to context, giving powerful expression to people and place.

warrenandmahoney.com



WEBBER DESIGN

Webber Design Principal Paul Webber has over 30 years' experience as a structural engineer with a proven track record in managing high profile consulting practices both locally and internationally.

Webber Design has worked on numerous major structural and civil projects in Australia and Asia and has acquired specialist skills in the design, planning and design management on a variety of projects including high-rise residential and commercial structures, resort facilities, retail centres, industrial facilities, aircraft hangars, health and infrastructure projects.

webberdesign.com



ADP

ADP is a growing engineering company with our people at our core. Everything we do and why we do it is driven by our aligned sense of purpose and our vision; 'creating great environments with great people'. Working with great clients, architects and consultants, we aspire to be key influencers in our industry. We bring everyday environments to life, utilising the best mix of technology, innovation and inspiration. Established in 2011, ADP is 100% Australian owned and has grown to 120+ people across Sydney, Melbourne and Brisbane.

adpconsulting.com.au



THE DEVELOPERS

THE LANDMARK



NEW HOPE

New Hope Group was founded in 1982. Our business started from agriculture, an ancient and promising industry. Today, New Hope Group is diversified across agriculture, animal husbandry, food processing, property development and financial services; we have also invested into emerging innovative industries with growth potential. New Hope Group has a presence in more than 30 countries and regions, with over 80,000 employees worldwide.

en.newhopegroup.com



NEW HOPE GROUP

COLLABORATORS



VIMG

VIMG is one of the most respected property developers in Sydney and Melbourne. Over the past 10 years, VIMG has successfully invested and developed over half a billion dollars' worth of iconic residential and mixed-use properties. VIMG's experience in managing whole-of-life property developments and delivering cost-effective premium products to clients is a testimony to its capacity and market awareness.

vimg.com.au



VIMG

1800 959 998

THELANDMARKSYDNEY.COM.AU



Disclaimer: Colliers International does not guarantee, warrant or represent that the information contained in thiers advertising and marketing document is correct. Any interested parties should make their own enquiries as to the accuracy of the information. We exclude all inferred or implied terms, conditions and warranties arising out of this document and any liability for loss or damage arising there from.

